

## 7 University Elementary School

Address: 1111 North Russell Road, Bloomington, IN  
Enrollment in 2012-2013: 474  
Grades: PK-6  
Students within Walk Boundary: 20  
Students within One Mile: 40+

### 7.1 Existing Conditions

#### Overview

University Elementary School has a number of students who live in the nearby Tamarron neighborhood and just north of school who have good biking and walking access to the school via a short paved path. Outside these areas, conditions for walking and bicycling diminish quickly. To increase student walking and bicycling rates at University, the school should focus on raising participation as much as possible among nearby students, and focus on secondary SRTS program goals for students living further from school.

#### School Campus

University Elementary School is located on the east side of North Russell Road and north of East Tamarron Drive. The campus has two driveways, both off of N Russell Road. One driveway leads to the northern parking lot, where school staff park and where parents drop-off and pick-up their students. The other driveway leads to the bus parking and the visitor parking areas. The school playground and playfields are on the west side of the campus. The playground also features a paved pedestrian path.

The main door to the school is located on the east side of the building, facing N Russell Road. Visitors are instructed to use this main entrance, while parents are instructed to use the north door to access the school with their students.

A short neighborhood connector path, located by the bus loop on the southwest corner of campus, leads to E Tamarron Drive and the neighborhood to the south of the school.

#### Surrounding Land Use

University is located on the far east side of Bloomington, where the landscape is wooded and hilly. The neighborhoods to the north of the school are built on cul-de-sac roads along the top of bluffs with wooded valleys between each cluster of homes. The neighborhoods include E Rachels Glen Road, Devonshire Court, Devonshire Lane and Mabel's Way. All local streets are built with sidewalks on at least one side. N Russell Road has a sidewalk on the west side of the street reaching from the school campus approximately  $\frac{3}{4}$  mile north to Mabel's Way.

To the south of the school is Tamarron Drive, a low-density residential neighborhood. The Tamarron Drive area is very walkable, with sidewalks on both sides of all streets and a landscaped connection to the school.

Many students live on the east side of E 10th Street, which is difficult to cross and has no pedestrian facilities east of N Grandview Drive.



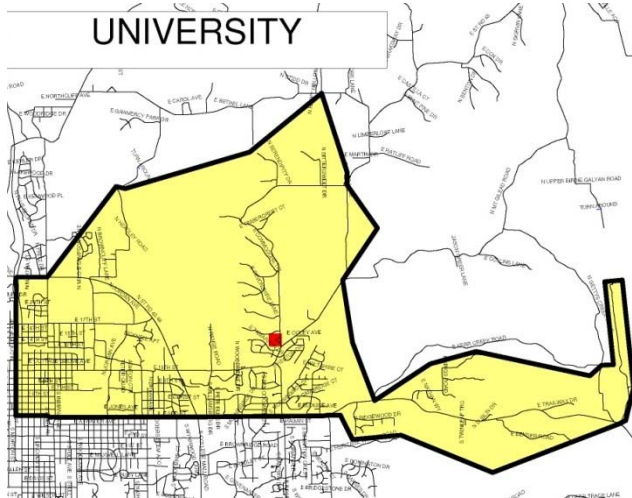
*University Elementary has a designated parent driver pick-up and drop-off area*



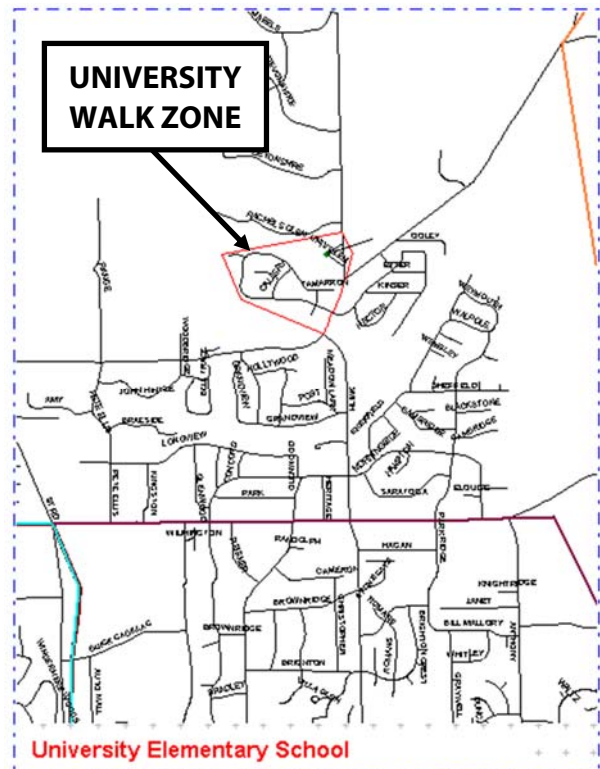
*The playground and paved walking path at University Elementary School encourage students to walk during recess.*

## Student Walking and Biking and Bicycle/Pedestrian Facilities

The University student walking zone is limited to the Tamarron Drive neighborhood. Few students bike and walk to school. The students who walk typically come from either the Tamarron Drive neighborhood or from the north along the N Russell Road sidewalk.



**Figure 7-1. University Enrollment Area (yellow)**



**Figure 7-2. University Walk Zone (red border)**

Despite the lack of sidewalks along the route and lack of crossing facilities on E 10<sup>th</sup> Street, a few parents walk with their students to school all the way from N Smith Road from the south. The lack of pedestrian facilities on E 10<sup>th</sup> Street also causes difficulties for Indiana University students coming to University School for internships and student teaching opportunities.

### **Crossing Guard Locations**

There are no crossing guards currently assigned to this school.

### **Driver Staging Area and Access**

Parents are instructed to pick-up and drop-off students at the parking lot on the north side of campus. Improvements including a bright colored awning, additional pavement painting and signage were added to this area during the 2012-2013 school year to increase safety. The arrival and dismissal procedures are orderly despite long lines of vehicles at peak times, especially in the mornings.

### **Bus Staging Area**

Buses enter the campus on a separate drive just south of the “parent” driveway and use the bus turnaround at the southwest corner of the campus. Buses exit the campus by the same driveway they entered. Parents are not allowed to deliver or pick-up their students at this lot. The separation of buses from the parent driver area allows bus traffic to flow smoothly.



*Drop-off and pick-up at University takes place directly in front of the school entrance.*

## Relevant School Policies

The following school policies are published on the University Elementary School website:

### ***Safe Schools***

*Planning for student and school safety and quality instructional time is a priority of School, State, Federal, and local agencies. This is even more on our minds due to heightened security at school sites across the country.*

*University School has responded to these needs through our Safe Schools Plan, through the procedures we use for people entering our school, the procedures we have in place that keep classroom disruptions to a minimum, and the knowledge that we know who is in our building at all times.*

*University School has developed a Safe Schools Plan, which includes fire, tornado, earthquake and all emergency drill procedures that could be used if any emergency should arise. Students and staff practice these drills on a routine basis.*

*University School's plan includes the following message to ALL individuals entering this school:*

- 1. Parents are to use the NORTH ENTRANCE of school to pick-up and drop-off students. This includes students in all preschool programs through Grade 6 as well as Extended Day.*
- 2. Students are to arrive at school no earlier than 8:45 am (7:45 am for ALPS students) unless they are in Extended Day.*
- 3. Vehicles other than school buses are NEVER to drop students off at the east or south side of the building where buses travel. Only buses are allowed in the EAST parking lot between the hours of 8:30 am and 9:00 am, and again between the hours of 3:00 pm and 3:30 pm.*
- 4. Security and emergency procedures require all individuals entering the school to register at the school office between the hours of 9:00 am and 3:15 pm.*
- 5. Parking in the fire and emergency lanes in front of the building is prohibited by law. The City of Bloomington will enforce the "no parking in fire and emergency lanes." Cars may be towed at the owner's expense.*
- 6. Handicapped spaces are only to be used if proper permits are displayed.*

## 7.2 Issues and Recommendations

The map on the following page presents the existing bikeways and sidewalks around University Elementary School. The existing issues identified in black circles correspond with the issues presented in Table 7-1. Issues were generated from existing conditions and school staff input. Many of these issues require working with the City to identify next steps, as discussed in the table.

**Table 7-1. SRTS Issues at University Elementary School**

<b>Map Key</b>	<b>Location</b>	<b>Issue/Discussion</b>	<b>Recommendations</b>
A	E Tamarron Drive and E 10th Street	Current design of this intersection enables speeding and is challenging for pedestrian crossings	Work with City to reconstruct the intersection to promote safer pedestrian and bicyclist crossings (see <b>Table 7-2</b> )
B	E 10 <sup>th</sup> Street between N Smith Road and E Deckard Drive	Sidewalk gap results in poor pedestrian accommodations	Fill sidewalk gap on the east side of E 10 <sup>th</sup> Street
C	E Deckard Drive and E 10 <sup>th</sup> Street	Intersection lacks pedestrian accommodations	Shorten radii on E Deckard Road leg of intersection to more closely match E Tamarron Drive, install crosswalk on E Deckard and across E 10 <sup>th</sup> Street, add ped crossing signs on E 10 <sup>th</sup> Street
D	School driveway (north)	Driveway has a crosswalk but no stop sign and stop bar for existing drivers	Add stop sign and stop bar Reminder parents about arrival dismissal policy in school newsletter
E	E Rachels Glen Road	Opportunity for a more direct connection to the school	Consider a small connector trail to E Rachels Way Road
F	E 10 <sup>th</sup> Street	Street has poor pedestrian and bicycle accommodation	Work with the City to promote development of a complete street when street is reconstructed (see <b>Table 7-2</b> )
G	Multi-family complex	Poor pedestrian accommodations and heavy existing pedestrian activity due to students who walk despite current conditions	Work with the City to improve walking route along N Smith Road and E 10 <sup>th</sup> Street (see <b>Table 7-2</b> )
H	E 10 <sup>th</sup> Street from N Russell Road to E Tamarron Drive	Lack of continuous pedestrian accommodations	Continue sidewalk along school driveway to connect with existing sidewalk at E Tamarron Drive
I	School driveway at N Russell Road (south)	Poor pedestrian accommodations at driveway	Shorten radius of driveway and install a crosswalk
J	E Rachels Glen Road, Devonshire Court and Devonshire Lane and N Russell Road	Many students use the existing side path and boardwalk to access the school from the neighborhoods to the north, but the side streets lack crosswalks	Work with the City to add crosswalks at each side road intersection to connect the existing sidepath along the west side of N Russell Road (see <b>Table 7-2</b> )

*This page intentionally left blank.*



# University Elementary School



**Legend**

- Issue / Recommendation
- 🚦 Traffic Signal
- 🚶 Crossing Guard
- Sidewalk
- Trail/Path
- ⬡ MCCSC School Walk Boundary



Map 7-1. University Elementary School Issues Map



*This page intentionally left blank.*



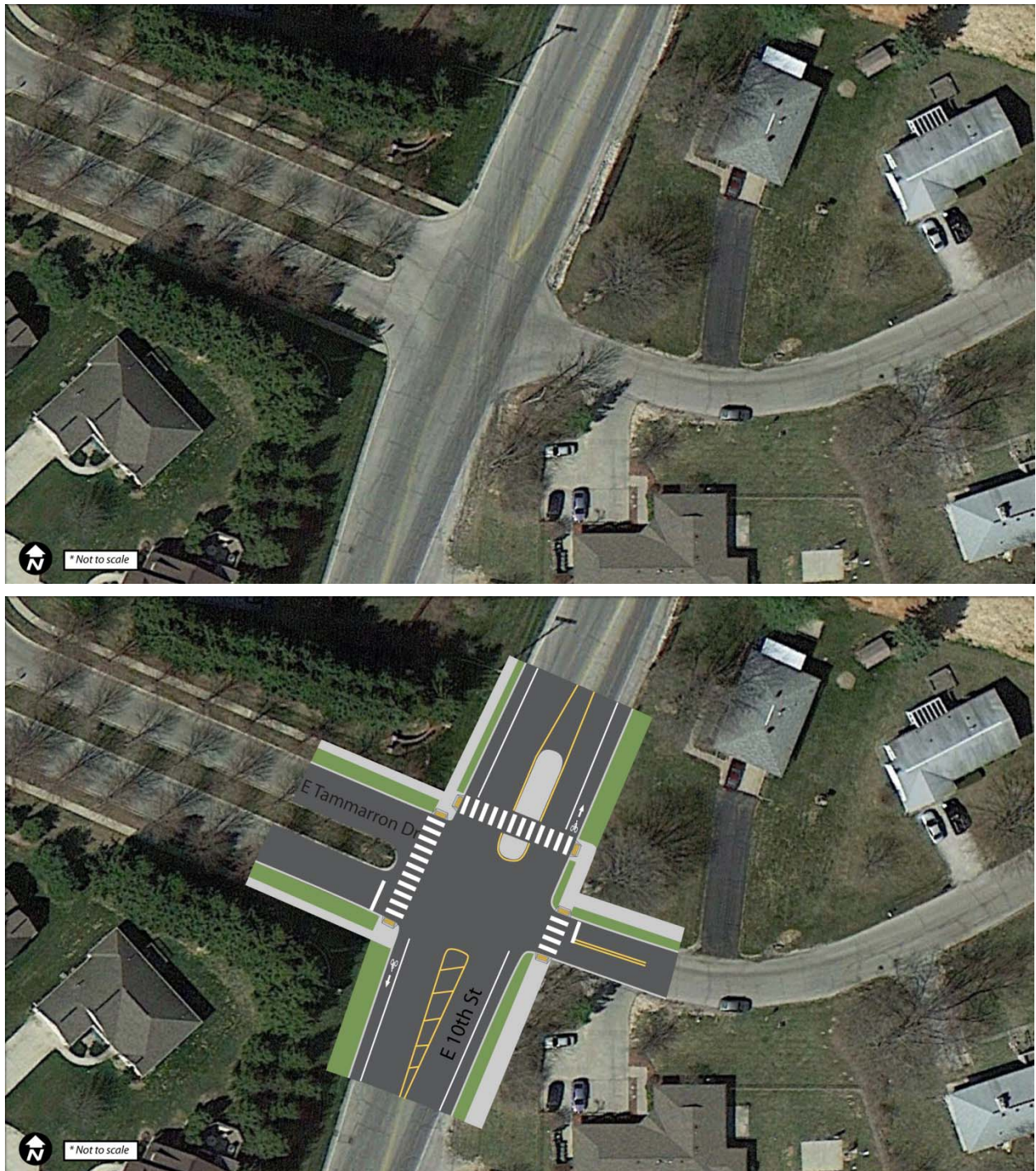
## Infrastructure Recommendations

Table 7-2 lists key improvements that would be led by the City of Bloomington to improve conditions for students traveling to University Elementary School. A map showing the location of these recommended improvements, along with other recommendations for other MCCSC schools, can be found in Appendix A.

**Table 7-2. Infrastructure Recommendations at University Elementary School**

Map Key	Location	Issue	Recommendation
26	N Russell Road and E 10 <sup>th</sup> Street	Intersection is not designed to accommodate bicycle or pedestrian traffic and is a barrier to students approaching from the south	Consider school related pedestrian and bicycle traffic when E 10 <sup>th</sup> Street is reconstructed and when this N Russell Rd and E 10 <sup>th</sup> St intersection is reconstructed
27	E 10 <sup>th</sup> Street from E Tamarron Drive to N Smith Road	Families who live in the multi-family homes on N Smith Road often walk, but crossing E 10 <sup>th</sup> Street is a challenge; from the west side of E 10 <sup>th</sup> Street, they can use the Tamarron Drive connector to access the campus	Add a sidewalk on the E 10 <sup>th</sup> Street from N Smith Road to E Tamarron Drive Improve the intersection of E Tamarron Drive and E 10 <sup>th</sup> Street for pedestrian crossing Shorten turning radii on E Deckard Drive and E 10 <sup>th</sup> Street
28	E Rachels Glen Road, Devonshire Court and Devonshire Lane and N Russell Road	Many students use the existing side path and boardwalk to access the school from the neighborhoods to the north, but the side streets lack crosswalks	Add crosswalks at each side road intersection to connect the existing sidepath along the west side of N Russell Road

### Example Infrastructure Recommendation Concepts



**Figure 7-3: East Tammarron Drive and East 10<sup>th</sup> Street (May Key 27); Current Condition (Top) and After Recommended Improvements (Bottom)**

## One-Year Action Plan

The Action Plan is a one-year forecast of attainable goals for each school as determined by MCCSC staff. The Plan complements the above infrastructure recommendations by prioritizing short-term non-infrastructure and infrastructure improvements. It should be updated periodically with new tasks as the previous ones are accomplished or new opportunities arise. **Appendix A** outlines the infrastructure recommendations in greater detail, while **Appendix E** provides best practices for SRTS across all the “E’s.”

**Table 7-3: University Elementary School One Year Action Plan**

<b>Non-infrastructure</b>	
Encouragement	Implement Parent Pledge
	Participate in the International Walk to School Day celebration in October 2014 with a Celebrity Walking School Bus
	During the months of April and May of 2014 run a “punch card” program to reward students for biking and walking
Education	Focus an education effort on safe walking practices for the students living in the neighborhoods north of the school along N Russell Road
	Include a SRTS Fact Corner in the monthly school newsletter
Enforcement	Implement School Safety Campaign
Evaluation	Conduct parent surveys and student hand tallies
<b>Infrastructure</b>	
Intersections	Initiate the necessary engineering studies to improve the crossing at East 10 <sup>th</sup> Street and E Tamarron Drive
Signage for School Area Traffic Control	Install school zone signage as recommended in the Manual of Uniform Traffic Control Devices (MUTCD)

## Primary School Route Map

The map on the following page shows recommended walking and bicycling routes to University Elementary.

This map can be shared with parents during school orientation and during the publicity for Walk to School Day or similar events. Parents who live too far from school to walk could consider meeting at a location along one of the routes and walking as a group to school.

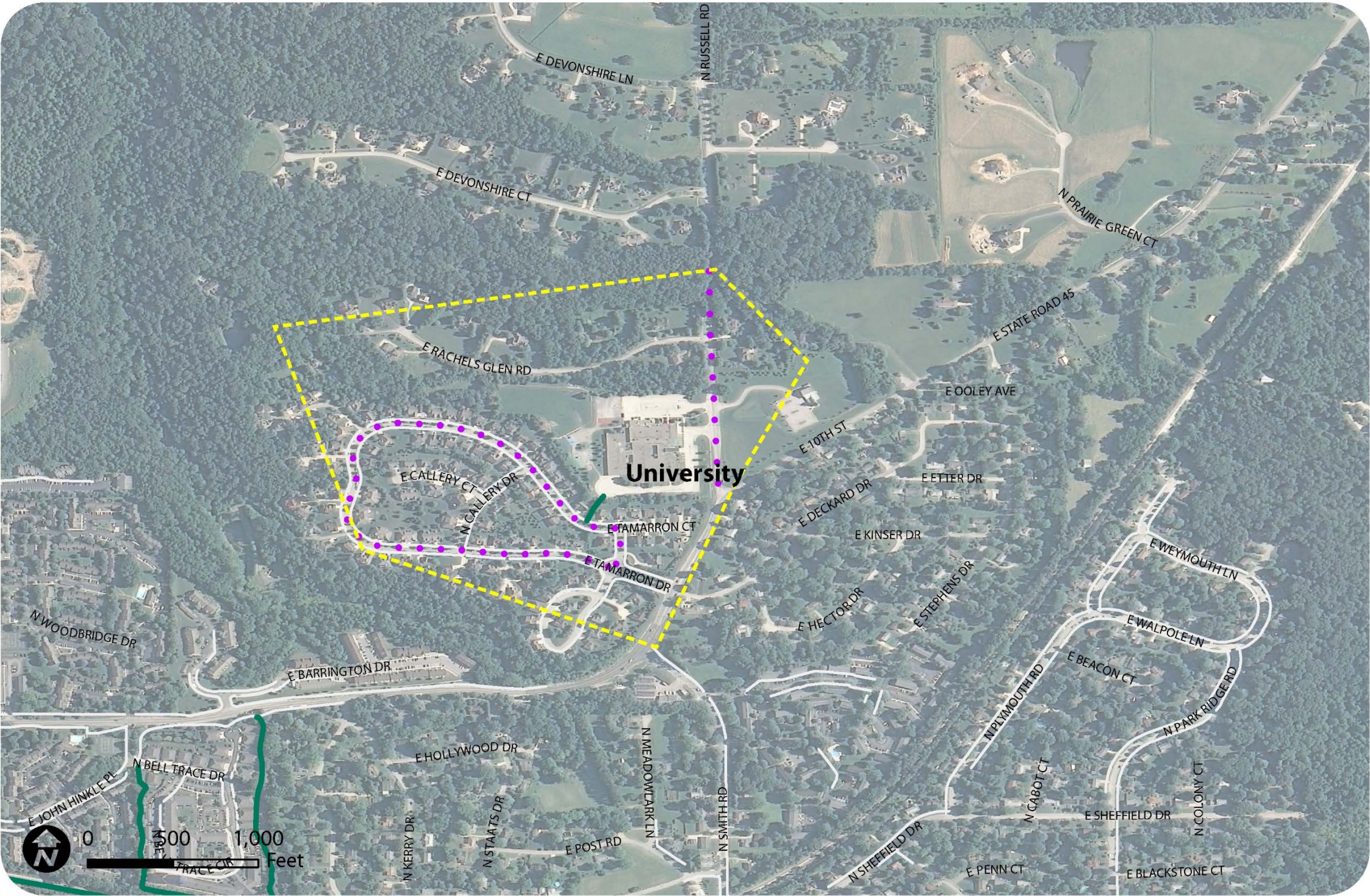
The map also establishes priority locations for improvements. It can support a grant application for infrastructure funding. As improvements are made, the maps should be revised to reflect the most recent conditions for walking and bicycling to University Elementary.






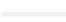


*This page intentionally left blank.*



# University Elementary School



**Legend**

-  Traffic Signal
-  Crossing Guard
-  Primary School Route
-  Sidewalk
-  Trail/Path
-  MCCSC School Walk Boundary



Map 7-2. University Elementary Primary School Route Map



*This page intentionally left blank*