

## 4 Fairview Elementary School

Address: 627 West 8th Street, Bloomington, IN  
Enrollment in 2012-2013: 303  
Grades: PK-6  
Students within Walk Boundary: 23  
Students within One Mile: 155

### 4.1 Existing Conditions

#### Overview

The neighborhood around Fairview Elementary School benefits from a mostly complete sidewalk network and easy access to the Bloomington Rail Trail (known as the B-Line) and several bike routes. This school has excellent on-campus facilities, and the neighborhood has a good walking environment with maintained crosswalks and the crossing guards. Many students live outside of the walk zone, but those who do live within the zone should be encouraged to take advantage of the good existing conditions and bike or walk to school. Fairview stands to benefit from encouragement and education programs that encourage students and their families to make use of available bicycling and walking routes.

#### School Campus

The Fairview campus is located between Rogers Street and N Fairview Street and between W 7<sup>th</sup> Street and W 8<sup>th</sup> Street. The campus is surrounded by sidewalks on all four sides and sidewalks on both sides of the surrounding streets. The campus has a paved walking path that circles the west side of the campus, a large grassy play area, a playground and a basketball court. These features contribute to active school days for the students and a place to be outside and active after the school day. The campus has a parking lot on the north side of campus and a loop drive on the north side of the building.

Fairview Elementary is a new school located on the same campus as the previous school, as such it is located in an established residential area in Bloomington. Residential neighborhoods are located to the west and south of the school. North of the school is mostly open space, the B-Line Trail and an active rail grade. Downtown Bloomington is east of the school (just east of Rogers Street) with City offices, various businesses and restaurants.



*The pedestrian path at Fairview Elementary provides a good walking and biking route to school.*

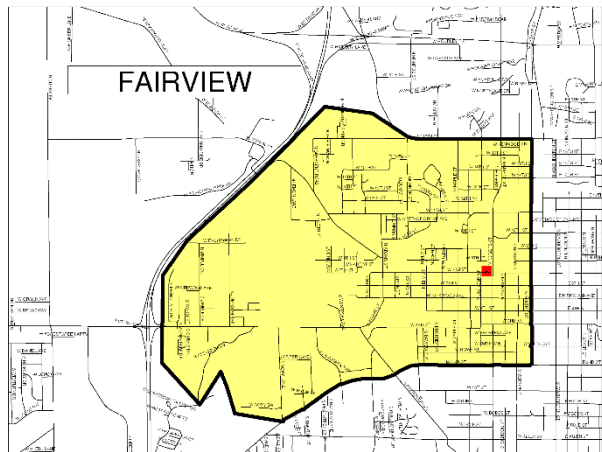
## Surrounding Land Use and Bicycle/Pedestrian Facilities

The surrounding neighborhood is mostly single family residential with a fairly complete sidewalk network in good condition. Small lots and narrow streets make the immediate neighborhood around the school a great one for walking. Another neighborhood amenity that adds to the biking and walking opportunities near the school is the B-Line Trail, which passes east to west about three blocks north of the school.

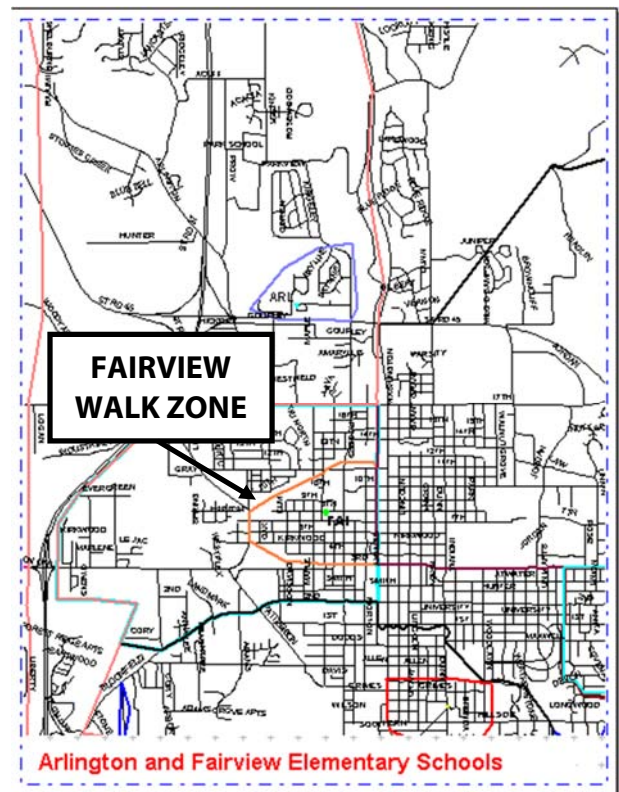
## Student Walking and Biking

The walking boundary for the school is West 3<sup>rd</sup> Street to the south, Rogers Street to the east, the B-Line and West 11<sup>th</sup> Street to the north and North Adams Street on the west.

The School Corporation does not provide transportation to Fairview students living north of Kirkwood Ave, south of the B-line, east of Adams Street, and west of Rogers Street (see **Figure 4-2**). In the 2012-2013 school year, 23 of the 303 students or about 7 percent of the student body lived with the walk boundary.



**Figure 4-1. Fairview Enrollment Area (yellow)**



**Figure 4-2. Fairview Walk Zone  
(orange border)**

As mentioned above, the neighborhood has a fairly complete sidewalk network in good condition on one or both sides of the streets. From the railroad north of the school to West Kirkwood Avenue, and from North Adams Street to Rogers Street, the streets are all local residential streets with low volumes of traffic and low speeds. Though not many students walk to school at this time, the current infrastructure surrounding the school and the crossing guards could accommodate much higher numbers of pedestrians.



*Bike parking at Fairview Elementary invites students.*

## Crossing Guard Locations

Adult crossing guards are located at the following intersections:

- North Fairview Street and West 8<sup>th</sup> Street
- North Fairview Street and West 7<sup>th</sup> Street
- North Maple Street and West 6<sup>th</sup> Street
- North Maple Street and West Kirkwood Ave

Despite the walkability of the surrounding neighborhoods, the crossing guards report relatively few students crossing at their intersections. Crossing guards at the intersections of North Fairview and West 8<sup>th</sup> and North Fairview and West 7<sup>th</sup> estimated student crossings per day in the low 20's. Estimates at the two crossing guard locations on North Maple Street were lower, in the low teens per day.



*The parent drop-off at Fairview Elementary can get congested during drop-off hours.*



## Driver Staging Area and Access

The parents use the driveways off of W 8<sup>th</sup> Street to drop students off in the morning and pick them up in the afternoons. The queuing area for the cars is rather short and the waiting cars often back up on to W 8<sup>th</sup> Street. As students exit their cars, they walk on the sidewalk around to the ramp. Staff members are stationed at the door to the school and at the staff parking lot entrance to direct traffic. The staff person stationed at the staff parking lot driveway helps students exit the campus to W 8<sup>th</sup> Street.

The only specific issue with the parent driver staging area is behavioral. Some parents have been seen dropping off students on the north side of W 8<sup>th</sup> Street to avoid entering the congestion at the loop driveway on the north side of the school. This should be strongly discouraged, as it puts the students in the position of having to cross a busy street. If the parent would like to drop the student off without entering the driveway, an alternative would be to designate a drop-off area at the corner of N Fairview Street and W 8<sup>th</sup> Street. The crossing guard could then escort the student safely to the south side of W 8<sup>th</sup> Street.



*The 8<sup>th</sup> Street family drop-off and pick-up occurs in the one-way circle drive to reduce conflicts.*

## Bus Staging Area

The buses use W 7<sup>th</sup> Street for arrival and dismissal, lining up on the north side to drop-off or pick-up students. The bus staging area works well and students are loading within minutes of the afternoon bell.

## 4.2 Issues and Recommendations

Map 3 presents the existing bikeways and sidewalks around Fairview Elementary School. The existing issues identified in black circles correspond with the issues presented in Table 4-1. Issues were generated from existing conditions and school staff input. Many of these issues require working with the City to identify next steps, as discussed in the table.

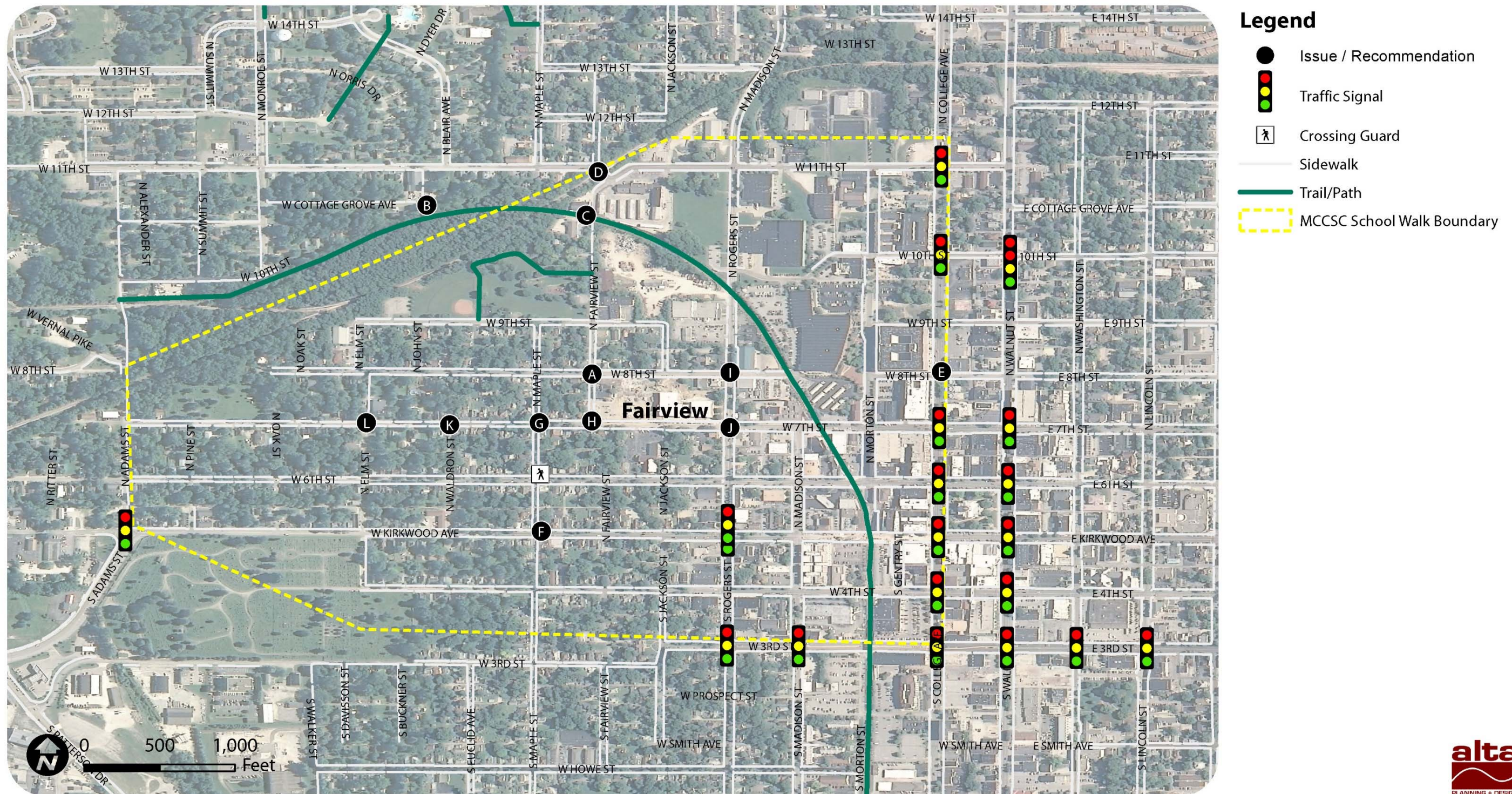
**Table 4-1. SRTS Issues at Fairview Elementary School**

<b>Map Key</b>	<b>Location</b>	<b>Issue/Discussion</b>	<b>Recommendation</b>
A	W 8 <sup>th</sup> Street and N Fairview Street	This is a popular intersection for approaching the school	Consider high visibility crosswalks on all legs
B	Diamond Street/W Cottage Grove Avenue connection to the B-Line	The B-Line Trail is an important connection and represents a great opportunity to increase biking and walking to school	Formalize path connection Walking Wednesday or Walking School Bus programs could meet at Diamond Street and use the B-Line to get to school
C	B-Line Trail	The B-Line Trail is an important connection and represents a great opportunity to increase biking and walking to school	Advertise the proximity of the B-Line Trail (only 1.5 blocks north of the school via N Fairview) in the school newsletter and other outlets
D	S Curve at the Trestle	Students are not allowed to cross here due to traffic safety concerns	Work with the City to provide an safe alternative crossing
E	S College Avenue /S Rogers	S College Avenue is the attendance boundary but the walk zone boundary only extends to S Rogers Street	Change walk zone boundary to coincide with attendance boundary Walking Wednesday or On-Foot Fridays programs leaving from the downtown area might be a fruitful way to gain bikers or walkers
F	W Kirkwood Avenue and N Maple Street	This is a busy intersection that requires pedestrian accommodations	Maintain pedestrian accommodations and provide crossing guard support at this intersection
G	W 7 <sup>th</sup> Street and N Maple Street	W 7th Street is designated as the east/west primary SRTS route for Fairview; improved crosswalks may encourage parents to let their students walk to school	Work with City to maintain pedestrian accommodations and provide crossing guard support at this intersection (see <b>Table 4-2</b> )
H	N Fairview Street and W 7 <sup>th</sup> Street	This is a busy intersection that requires pedestrian accommodations	Maintain pedestrian accommodations and provide crossing guard support at this intersection
I	N Rogers Street and W 8th Street	Rogers is a busy street and it is difficult at times to find a gap in traffic to cross as a pedestrian	Work with City to improve intersections for pedestrians crossing N Rogers Street (see <b>Table 4-2</b> )
J	N Rogers Street and W 7th Street	Rogers is a busy street and it is difficult at times to find a gap in traffic to cross as a pedestrian	Work with City to improve intersections for pedestrians crossing N Rogers Street (see <b>Table 4-2</b> )
K	W 7th Street and N Waldron Street	W 7th Street is designated as the east/west primary SRTS route for Fairview; improved crosswalks may encourage parents to let their students walk to school	Work with City to improve intersections for pedestrians crossing N Waldron Street (see <b>Table 4-2</b> )
L	W 7th Street and N Elm Street	W 7th Street is designated as the east/west SRTS primary route for Fairview; Improved crosswalks may help parents decide to let their students walk to school	Work with City to improve intersections for pedestrians crossing N Elm Street (see <b>Table 4-2</b> )





# Fairview Elementary School



### Map 4-1. Fairview Elementary School Issues Map



*This page intentionally left blank.*



## Infrastructure Recommendations

Table 4-2 lists key improvements that would be led by the City of Bloomington to improve conditions for students traveling to Fairview Elementary School. A map showing the location of these recommended improvements, along with other recommendations for other MCCSC schools, can be found in Appendix A.

**Table 4-2. Infrastructure Recommendations at Fairview Elementary School**

Map Key	Location	Issue	Recommendation
8	N Rogers Street and W 8th Street	Rogers is a busy street and it is difficult at times to find a gap in traffic to cross as a pedestrian	Improve intersections for pedestrians crossing N Rogers Street
9	N Rogers Street and W 7th Street	Rogers is a busy street and it is difficult at times to find a gap in traffic to cross as a pedestrian	Improve intersections for pedestrians crossing N Rogers Street
10	W 7th Street and N Maple Street	W 7th Street is designated as the east/west primary SRTS route for Fairview; improved crosswalks may encourage parents to let their students walk to school	Add a crosswalk to cross N Maple Street on both the north and south sides
11	W 7th Street and N Waldron Street	W 7th Street is designated as the east/west SRTS primary route for Fairview; Improved crosswalks may help parents decide to let their students walk to school	Add a crosswalk to cross N Waldron Street on both the north and south sides
12	W 7th Street and N Elm Street	W 7th Street is designated as the east/west SRTS primary route for Fairview; Improved crosswalks may help parents decide to let their students walk to school	Add a crosswalk to cross N Elm Street on both the north and south sides

## One-Year Action Plan

The Action Plan is a one-year forecast of attainable goals for each school as determined by MCCSC staff. The Plan complements the above infrastructure recommendations by prioritizing short-term non-infrastructure and infrastructure improvements. It should be updated periodically with new tasks as the previous ones are accomplished or new opportunities arise. **Appendix A** outlines the infrastructure recommendations in greater detail, while **Appendix E** provides best practices for SRTS across all the “E’s.”

**Table 4-3: Fairview Elementary School One Year Action Plan****Non-infrastructure**

Type	
Encouragement	Implement Parent Pledge
	Participate in the International Walk to School Day celebration in October 2014 with a Celebrity Walking School Bus
	Advertise the presence of the crossing guards to the parents repeatedly to encourage them to allow their students to walk or bike to school
	Begin “Walking Wednesdays” or “On Foot Fridays” leaving from the intersection of the B Line and Diamond Street
Education	Focus an education effort on safe walking practices for the students living in the neighborhoods immediately surrounding the schools, south of the B Line, north of Kirkwood and east of Adams and west of Rogers Street
	Include a SRTS Fact Corner in the monthly school newsletter (see <b>Appendix C</b> )
Enforcement	Implement School Safety Campaign
Evaluation	Conduct parent surveys and student hand tallies

**Infrastructure**

Type	
Intersections	Update and maintain the crosswalk pavement markings and signage at the three crossing guard locations
	Initiate the engineering studies necessary to improve pedestrian conditions at Rogers and 8th and Rogers and 7th
	Improve the pedestrian crossings along 7th from Rogers to Adams as that is the primary route to school
Signage for School Area Traffic Control	Install school zone signage as recommended in the Manual of Uniform Traffic Control Devices (MUTCD)

**Primary School Route Map**

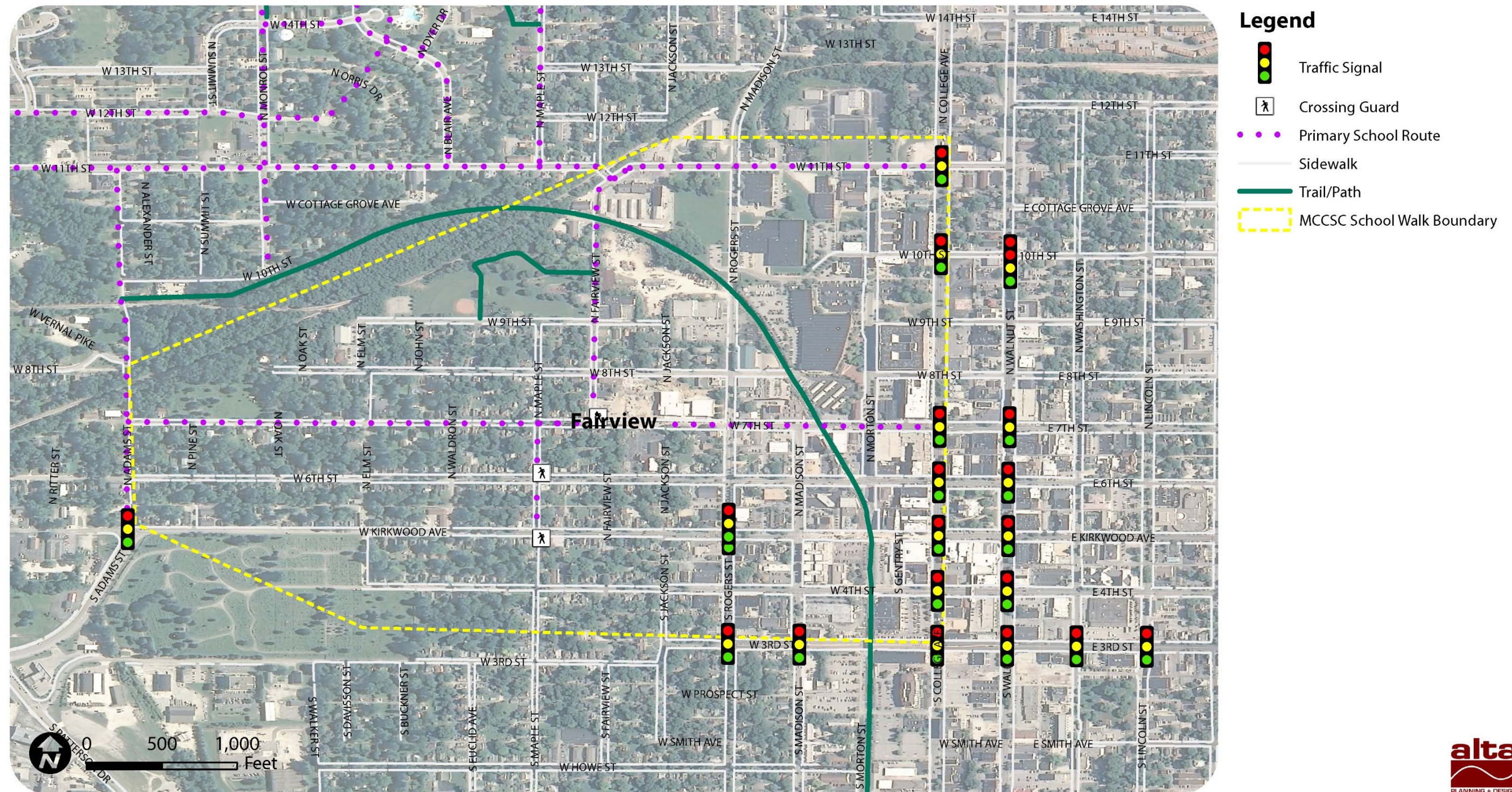
The map on the following page shows recommended walking and bicycling routes to Fairview Elementary.

This map can be shared with parents during school orientation and during the publicity for Walk to School Day or similar events. Parents who live too far from school to walk could consider meeting at a location along one of the routes and walking as a group to school.

The map also establishes priority locations for improvements. It can support a grant application for infrastructure funding. As improvements are made, the maps should be revised to reflect the most recent conditions for walking and bicycling to Fairview Elementary.



# Fairview Elementary School



**Map 4-2. Fairview Elementary Primary School Route Map**



*This page intentionally left blank*