

## 3 Binford and Rogers Elementary Schools

### Binford Elementary School

Address: 2300 East Second Street, Bloomington, IN

Enrollment in 2012-2013: 505

Grades: 3-6

Students within Walk Boundary: 32

Students within One Mile: 30

### Rogers Elementary School

Address: 2200 East Second Street, Bloomington, IN

Enrollment in 2012-2013: 347

Grades: K-2

Students within Walk Boundary: 20

Students within One Mile: 20

## 3.1 Existing Conditions

### Overview

Binford and Rogers Elementary Schools have the highest existing rates of student walking and bicycling among the schools studied in this Plan. With additional encouragement and other programs, as well as some minor infrastructure improvements, there is potential to grow walking and bicycling even further at the combined Binford and Rogers campus.

### School Campus

Binford and Rogers Elementary Schools share a campus located south of East 2<sup>nd</sup> Street and east of South High Street. South Roosevelt Street is a short cul-de-sac that separates the two schools in the middle of campus, with Rogers Elementary School on the west and Binford on the east. The main entrances of both schools face north toward East 2<sup>nd</sup> Street. The schools share a parking lot, which is located in the middle of the campus between the Rogers Elementary building and South Roosevelt Street. The schools also share a playground, located just south of Rogers and the combined parking lot. Grassy play fields surround the schools on the south and east.



*A student's bicycle rests against the bike rack at the shared Binford and Rogers campus.*

## Surrounding Land Use and Bicycle/Pedestrian Facilities

Sidewalks exist on both sides of East 2<sup>nd</sup> Street along the length of the north side of campus, reaching from South High Street to where East 2<sup>nd</sup> Street ends past S College Mall Road. Two marked crosswalks at East 1<sup>st</sup> Street connect the campus across South High Street to neighborhoods west of the campus. A short pedestrian path connects the south side of campus to East Maxwell Lane.

The neighborhoods surrounding the Binford and Rogers campus are residential, and consist primarily of single-family homes on large lots. The local street network generally follows a grid pattern, with incomplete sidewalks on local streets, and sidewalks on one or both sides of through streets such as South High Street. Several short pedestrian paths provide additional connections between the local streets in nearby neighborhoods, greatly improving walkability in the area. Existing infrastructure within the walk zone is conducive to biking and walking to school with low volume and speed streets, sidewalks, and neighborhood trail connectors.

A quarter mile to the north of the two schools, East 3<sup>rd</sup> Street creates a barrier for students. The street has a five-lane cross section and high traffic volumes, making it difficult to cross when bicycling or walking.

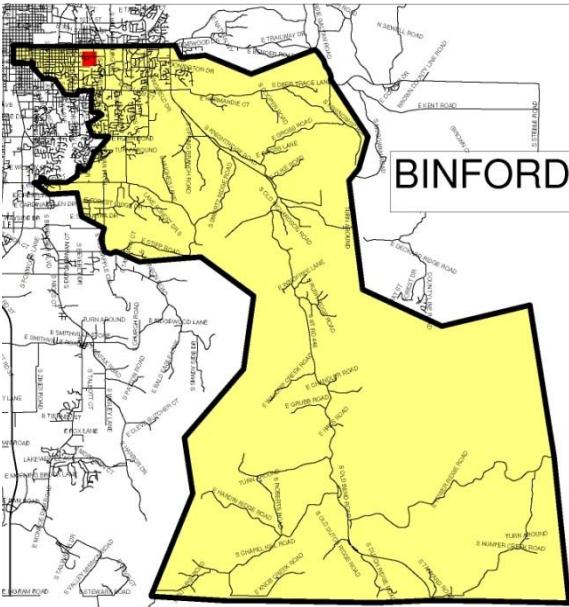
St. Charles School is a private Catholic school located directly north of the Binford and Rogers campus between East 2<sup>nd</sup> Street and East 3<sup>rd</sup> Street. St. Charles generates additional student and school related traffic in the area during similar peak arrival and dismissal times.

## Student Walking and Biking

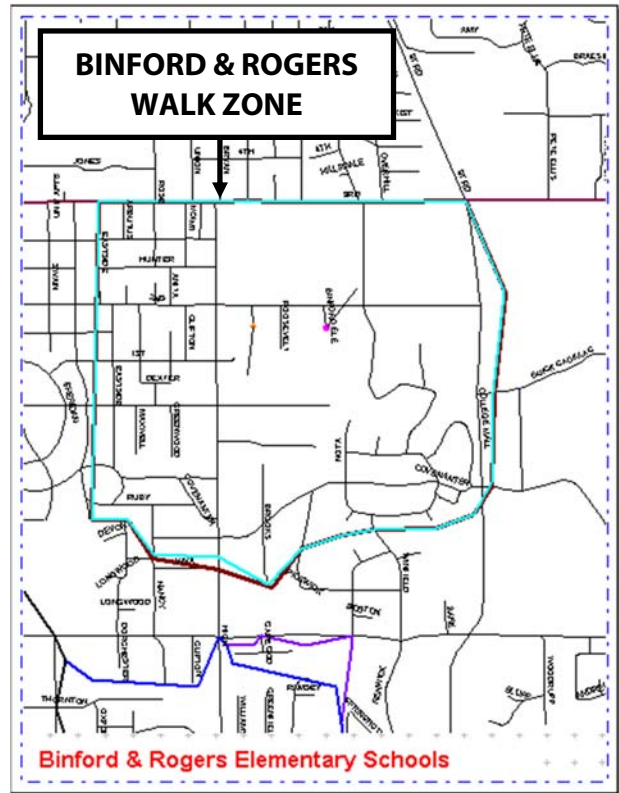
The walking boundary for these schools extends east to South College Mall Road, north to East 3<sup>rd</sup> Street, west to South Eastside Drive and south to East Covenanter Drive. The blue line on Figure 3-2 delineates the walking zone for Binford Rogers. Fifty-two students or six percent of the combined enrollment live within the walking zone.



*A path connects the schools with neighborhoods to the south via Maxwell Lane.*



**Figure 3-1. Binford and Rogers Enrollment Area (yellow)**



**Figure 3-2. Binford and Rogers Walk Zone (light blue border)**

Most of the students currently walking come from the western neighborhoods along East 1<sup>st</sup> Street, or from the south via the East Maxwell Lane neighborhood connector. Another neighborhood connector path connects the east end of East Maxwell Lane to South Nora Drive. The South Nora Drive neighborhood has a fairly complete sidewalk network.

### Crossing Guard Locations

The following intersections have adult crossing guards:

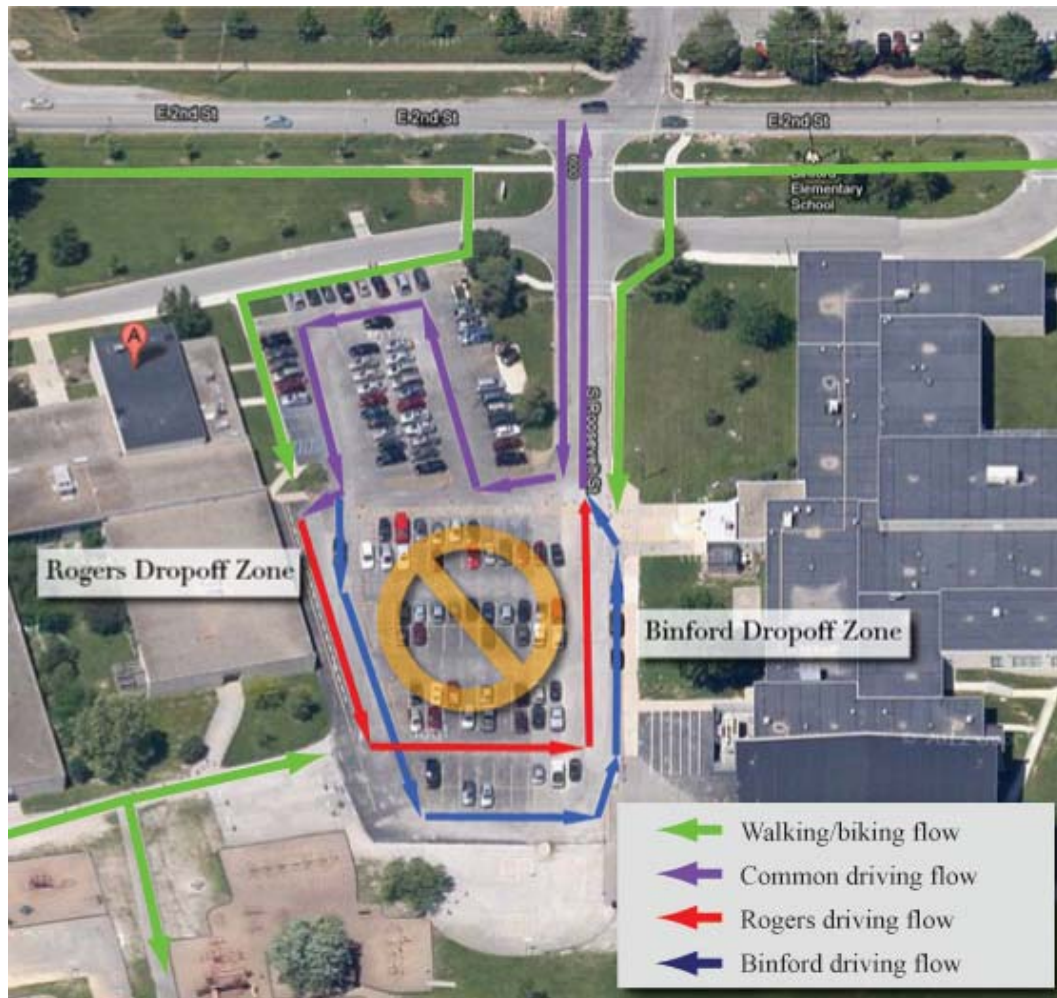
- East 2<sup>nd</sup> Street and East Roosevelt Street
- East 2<sup>nd</sup> Street and South High Street
- East 1<sup>st</sup> Street and South High Street

The East 2<sup>nd</sup> Street and East Roosevelt Street and the East 1<sup>st</sup> Street and South High Street crossing guards report an average of 30 students crossing each morning and afternoon. Crossing guards noted the East 2<sup>nd</sup> Street and South High Street intersection sees fewer students crossing per day. Estimates ranged from 2 to 20, with fewer than 10 students per day being most typical.

### Driver Staging Area and Access

Parents for both schools use the loop drive on the north side of Rogers to drop-off and pick-up students.





**Figure 3-3: Binford Rogers Traffic Flow Diagram**

## **Bus Staging Area**

### **3.2 Issues and Recommendations**

The map on the following page presents the existing bikeways and sidewalks around Binford and Rogers Elementary School. The existing issues identified in black circles correspond with the issues presented in Table 3-1. Issues were generated from existing conditions and school staff input. Many of these issues require working with the City to identify next steps, as discussed in the table. Appendix A includes a complete list of recommendations.

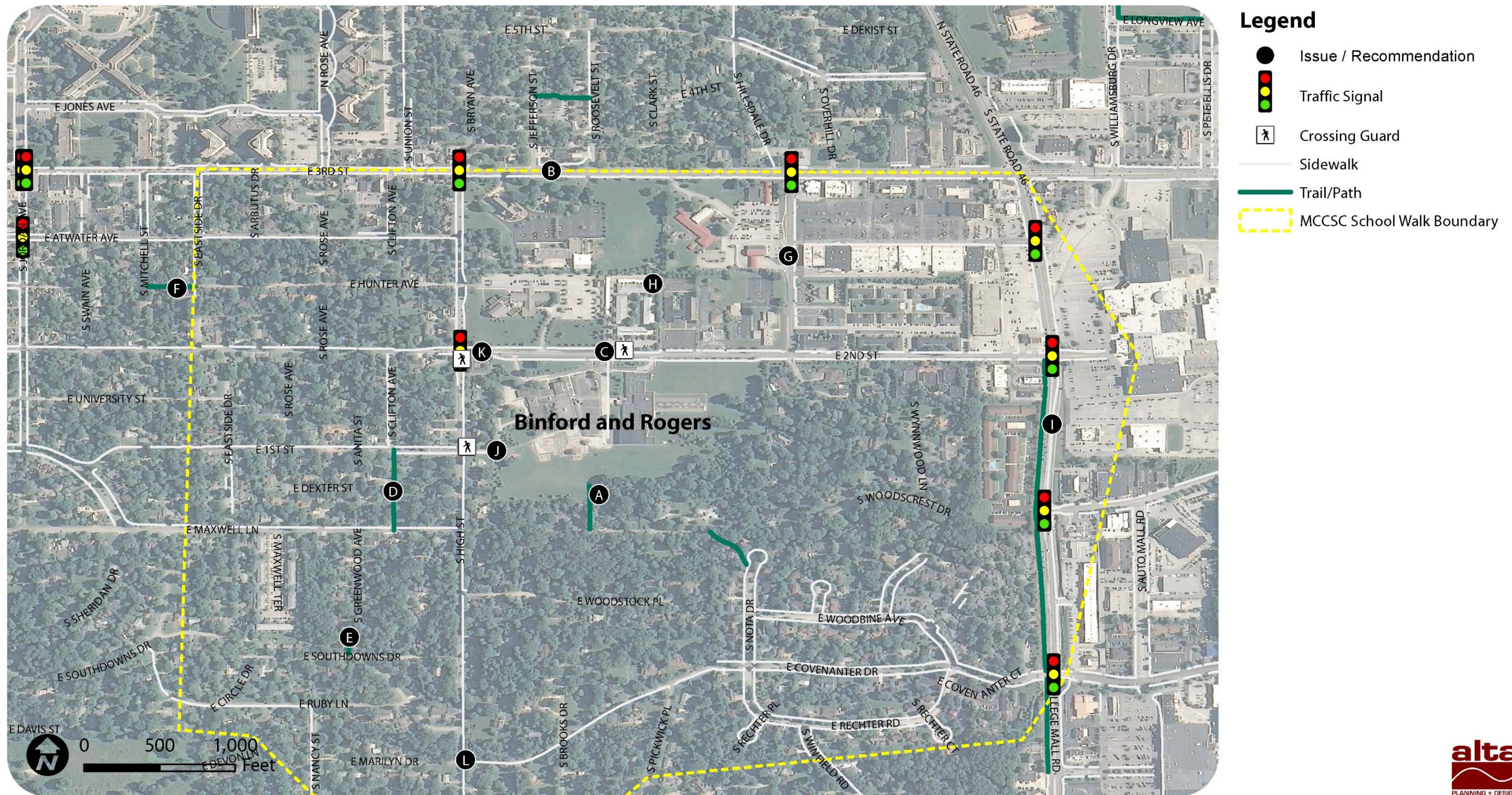
**Table 3-1. SRTS Issues at Binford and Rogers Elementary Schools**

<b>Map Key</b>	<b>Location</b>	<b>Issue/Discussion</b>	<b>Recommendation</b>
A	Trail connection to Maxwell Lane	This unofficial neighborhood connection to Maxwell Lane is used by many students and parents to access the campuses	Formalize path connection
B	E 3rd Street	Due to high traffic volumes and speeds, 3rd Street is a barrier to students biking and walking from the north; adult supervision is necessary for safe access to the schools from the north side of 3rd Street	Place crossing guard on 3rd Street
C	E 2nd Street and S Roosevelt Street	This intersection has a crossing guard, but it is reported to have poor driver compliance and poor visibility for drivers and people walking or biking	Work with the City to maintain and install pedestrian enhancements (see <b>Table 3-2</b> )
D	Trail connection from S Clifton Avenue to E Maxwell Lane	Trail connections throughout the neighborhood are important for students biking and walking to school, but are not mapped for parents to consider as school routes	Formalize and improve trail connection
E	Trail connection from S Greenwood Avenue to E Southdowns Drive	Trail connections throughout the neighborhood are important for students biking and walking to school, but are not mapped for parents to consider as school routes	Formalize and improve trail connection
F	Trail connection from Eddington to S Mitchell Street	Trail connections throughout the neighborhood are important for students biking and walking to school, but are not mapped for parents to consider as school routes	Formalize and improve trail connection
G	Woodcrest Drive	Woodcrest Drive lacks sidewalks or crosswalks, which are necessary for students to safely walk to and from school	Install sidewalks and crosswalks; consider an educational program teaching safe walking practices on residential streets without sidewalks
H	St. Charles school	With a similar bell schedule, traffic from St. Charles contributes to peak periods. Some students traveling to St. Charles also benefit from the Binford crossing guard	Keep crossing guard at this location
I	College Mall Road	Due to high traffic volumes and speeds, College Mall Road is a barrier to students biking and walking to the schools from the east	Encourage adult supervision though Walking School Bus and similar programs to help students cross safely
J	E 1st Street and S High Street	Many families use this intersection to approach the schools from the west, but the crosswalk has poor visibility due to a small hill and landscaping	Work with the City to maintain and install pedestrian enhancements (see <b>Table 3-2</b> )
K	E 2nd Street and S High Street	This is a popular route for both schools, but the wide and busy intersection is challenging for pedestrian traffic to cross	Work with the City to maintain and install pedestrian enhancements (see <b>Table 3-2</b> )
L	S High Street from E 2nd to E Marilyn Drive	S High St is a primary walking route for students attending Binford Rogers	Work with the City to maintain and install pedestrian enhancements (see <b>Table 3-2</b> )

*This page intentionally left blank.*



## Binford/Rogers Elementary Schools



### Map 3-1. Binford and Rogers Elementary Schools School Issues Map



*This page intentionally left blank.*



Table 3-2 lists key improvements that would be led by the City of Bloomington to improve conditions for students traveling to Binford and Rogers Elementary Schools. A map showing the location of these recommended improvements, along with other recommendations for other MCCSC schools, can be found in Appendix A.

**Table 3-2. Infrastructure Recommendations at Binford and Rogers Elementary Schools**

<b>Map Key</b>	<b>Location</b>	<b>Issue</b>	<b>Recommendation</b>
4	E 2nd Street and S Roosevelt Street	This intersection has a crossing guard, but it is reported to have poor driver compliance and poor visibility for drivers and people walking or biking	Maintain high-visibility crosswalks; consider a Rectangular Rapid Flash Beacon and a pedestrian island if possible
5	E 2nd Street and S High Street	This is a popular route for both schools, but the wide and busy intersection is challenging for pedestrian traffic to cross	Consider removing turning lanes, shortening turning radii, and adding curb extensions to reduce crossing distances, and check signal phasing for opportunities to improve safety
6	E 1st Street and S High Street	Many students and parents use this intersection to approach the schools from the west; Due to a small hill, the road's narrowness and landscaping, the crosswalk has poor visibility	Improve intersection for the many people who cross here to access the schools; Remove existing pedestrian signage, add a Rectangular Rapid Flash Beacon and updated pedestrian crossing signs, and maintain the high-visibility crosswalks
7	S High Street from E 2nd to E Marilyn Drive	S High Street is a primary walking route for students attending Binford Rogers	Make pedestrian improvements along S High Street as opportunities become available, including improved sidewalks, crosswalks, signage, and landscape maintenance

### Example Infrastructure Recommendation Concepts



**Figure 3-4: E 2nd Street and High Street (Map Key 23); Current Condition (Top) and After Recommended Improvements (Bottom)**



## One-Year Action Plan

The Action Plan is a one-year forecast of attainable goals for each school as determined by MCCSC staff. The Plan complements the above infrastructure recommendations by prioritizing short-term non-infrastructure and infrastructure improvements. It should be updated periodically with new tasks as the previous ones are accomplished or new opportunities arise. **Appendix A** outlines the infrastructure recommendations in greater detail, while **Appendix E** provides best practices for SRTS across all the “E’s.”

**Table 3-3 : Binford Rogers Elementary Schools One Year Action Plan**

<b>Program</b>	
Encouragement	Implement Parent Pledge
	Participate in the International Walk to School Day celebration in October 2014 with a Celebrity Walking School Bus
	Advertise the presence of the crossing guards to the parents repeatedly to encourage them to allow their students to walk or bike to school
	Begin “Walking Wednesdays” or “On Foot Fridays” leaving from the multi-family homes at East Hillside Drive and South Maxwell Street
Education	Include a SRTS Fact Corner in the monthly school newsletter (see <b>Appendix C</b> )
	Focus an education effort on safe walking practices for the students living in the neighborhoods immediately surrounding the schools, south of E 2 <sup>nd</sup> Street and west of S College Mall Road
Enforcement	Implement School Safety Campaign
Evaluation	Conduct parent surveys and student hand tallies
<b>Infrastructure</b>	
Intersections	Update and maintain the crosswalk pavement markings and signage at the three crossing guard locations
	Initiate the engineering studies necessary to improve pedestrian conditions at E Second Street and S High Street
	Improve the pedestrian crossing at E 1 <sup>st</sup> Street and S High Street by installing a Rapid Flashing Beacon and pedestrian curb extensions
Signage for School Area Traffic Control	Install school zone signage as recommended in the Manual of Uniform Traffic Control Devices (MUTCD)
Neighborhood Connections	Work with the neighbors and the City of Bloomington to maintain access to the various pedestrian neighborhood pathways that exist in the surrounding neighborhoods

## Primary School Route Map

The map on the following page shows recommended walking and bicycling routes to Binford Rogers Elementary.

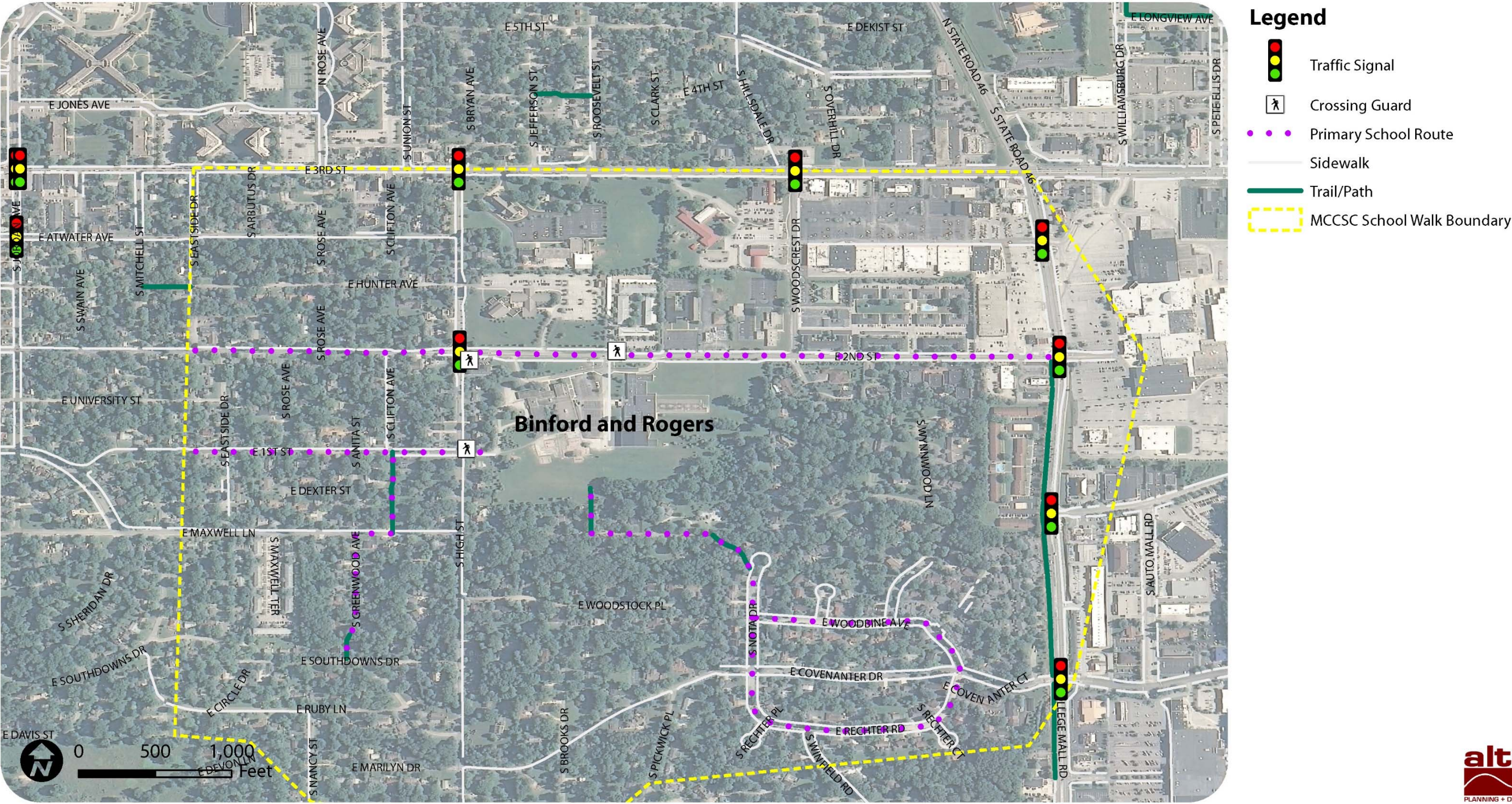
This map can be shared with parents during school orientation and during the publicity for Walk to School Day or similar events. Parents who live too far from school to walk could consider meeting at a location along one of the routes and walking as a group to school.

The map also establishes priority locations for improvements. It can support a grant application for infrastructure funding. As improvements are made, the maps should be revised to reflect the most recent conditions for walking and bicycling to Binford Rogers Elementary.

*This page intentionally left blank.*



# Binford/Rogers Elementary Schools



Map 3-2. Binford and Rogers Elementary Schools Primary School Route Map





*This page intentionally left blank*