

2 Arlington Heights Elementary School

Address: 700 West Parrish Road, Bloomington, IN
Enrollment in 2012-2013: 312
Grades: KG-6
Students within Walk Boundary: 12
Students within One Mile: 73



A student and parent walk toward Arlington Heights by the school's western parking lot.

2.1 Existing Conditions

Overview

Few Arlington Heights students currently walk or bike to school on a regular basis. Due to the barrier created by Highway 45/46 on the south side of the school, the neighborhood directly to the north presents the best opportunity for increasing walking and bicycling rates among students. Infrastructure projects to improve bicycling and walking access from other neighborhoods will be long-term projects due to the necessary engineering studies and the probable high costs. The school should focus on secondary SRTS strategies and goals to promote education and carpooling options in the near term.

Arlington Heights has previously received three SRTS grants primarily for encouragement work.

School Campus

Arlington Heights is just north of Highway 45/46 and west of North Kinser Pike. Loop driveways from West Parrish Road and North Stonelake Drive connect the school to streets on the east and west, respectively. The school's main entrance on the south side of the school building connects to the western loop driveway as well as the pedestrian bridge across Highway 45/46 that provides access to West Gourley Pike. The pavement of the bridge connector path is cracked and broken in places. Trees and shrubs along the southern edge of campus block the view of the pedestrian bridge from the school's main entrance.

A sidewalk on the north side of West Parrish Road provides a pedestrian connection to the school from the neighborhoods to the north. A short, paved pedestrian walkway connects the northeast corner of campus to homes on West Skyline Drive.

The campus has a large playground and an open grass field in the southeast corner. Trees and shrubs line the edges of campus, creating a buffer between the school and the highway to the south, and the residential neighborhood to the north.



The pedestrian bridge over Highway 45/46 is an important access to Arlington Heights.



A path connects to local neighborhoods at the eastern driveway loop.

Surrounding Land Use and Bicycle/Pedestrian Facilities

Neighborhoods on the north side of Arlington Heights are residential, made up of mostly single family homes on large lots. The neighborhood's streets follow a curvilinear pattern and lack curbs, gutters or sidewalks. Despite the lack of sidewalks, low speeds and traffic volumes make it possible for students to walk to school in the street with the proper training. The Briarcliff Drive neighborhood to the north lacks sidewalks as well.

Land use to the east and west of the Arlington Heights campus along Highway 45/46 is primarily commercial, with hotels to the west and a large grocery store to the east. North Kinser Pike has a side path all the way north to West Acuff Road and thus connects all the neighborhoods along North Kinser Pike to the campus.

Streets in the neighborhoods across the pedestrian bridge south of Highway 45/46 also lack sidewalks. Many Arlington Heights students live in Arlington Valley Mobile Home Park. While streets in Arlington Valley have sidewalks and the north edge of the neighborhood is just 400 feet south of the Highway 45/46 pedestrian bridge, there is no direct connection to the bridge for students walking and bicycling. Though the pedestrian bridge is accessible via North Monroe Street or West Gourley Pike, both streets lack sidewalks and require extra out of direction travel for students coming from Arlington Valley.

North Cascades Park is just a half-mile northeast of Arlington Heights School, across North Kinser Pike. The park is a well-used neighborhood asset and a common destination for walking field trips.

Student Walking and Biking

Arlington Heights students living south and east of North Kinser Pike and north of Highway 45/46 are expected to walk to school (Figure 2-2). In the 2012 -2013 school year only 12 of Arlington's students lived in the walk zone. Arlington Heights has a very small designated walking area that observes Highway 45/46 as a barrier on the south. To the north, the school's walking zone ends at North Kinser Pike and West Skyline Drive.

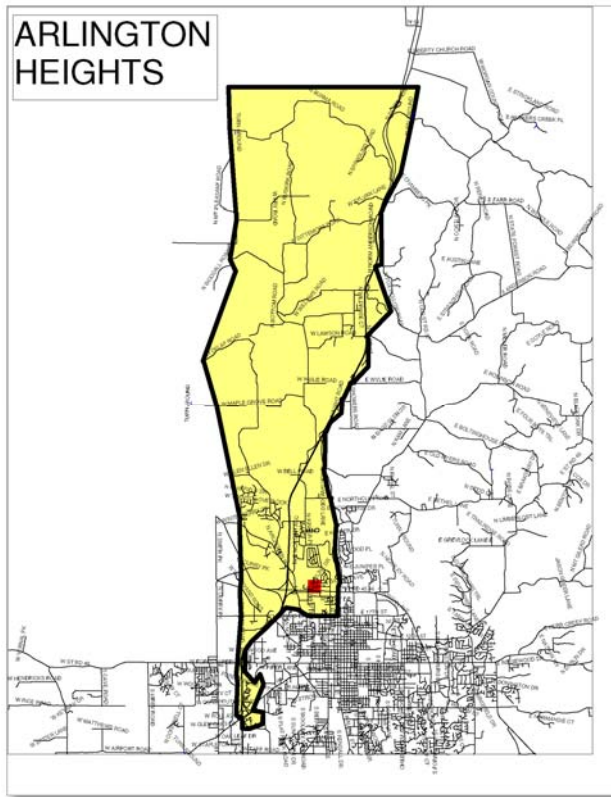


Figure 2-1. Arlington Enrollment Area (yellow)



Figure 2-2. Arlington Walk Zone (blue border)

Arlington Heights staff report that the only students who walk to school regularly come from the West Skyline Drive neighborhood via the paved pedestrian walkway that connects to the school's eastern driveway. Staff estimated that no more than 8 to 10 students walk to class on a given day. Students living to the south do not commonly use the pedestrian bridge across Highway 45/46, nor do students walk to school from the east or west using the sidewalks on commercial streets on either side of the school.

No student bicyclists were observed during one visit to the school for SRTS review. Arlington Heights does not have a bike rack installed on campus.

Crossing Guard Locations

There are no crossing guards currently assigned to this school.

Driver Staging Area and Access

School policy instructs parents to use the western driveway loop from West Stonelake Drive to drop-off and pick-up students at arrival and dismissal times. The driveway is congested especially at dismissal when the parents line up before final bell. Because the intersection of West Stonelake Drive and Highway 45/46 is unsignalized, parents traveling eastbound when leaving the school express frustration at the difficulty of turning left onto Highway 45/46 during heavy traffic. There is no vehicular access between these loop driveways.

Bus Staging Area

About six buses load and unload students using Arlington Heights' eastern loop driveway from West Parrish Street. This process runs smoothly without congestion from parent drivers interfering with the flow on buses and students arriving and leaving the school.



Students alight from school buses in the morning at the eastern drop off area at the Arlington Heights campus.

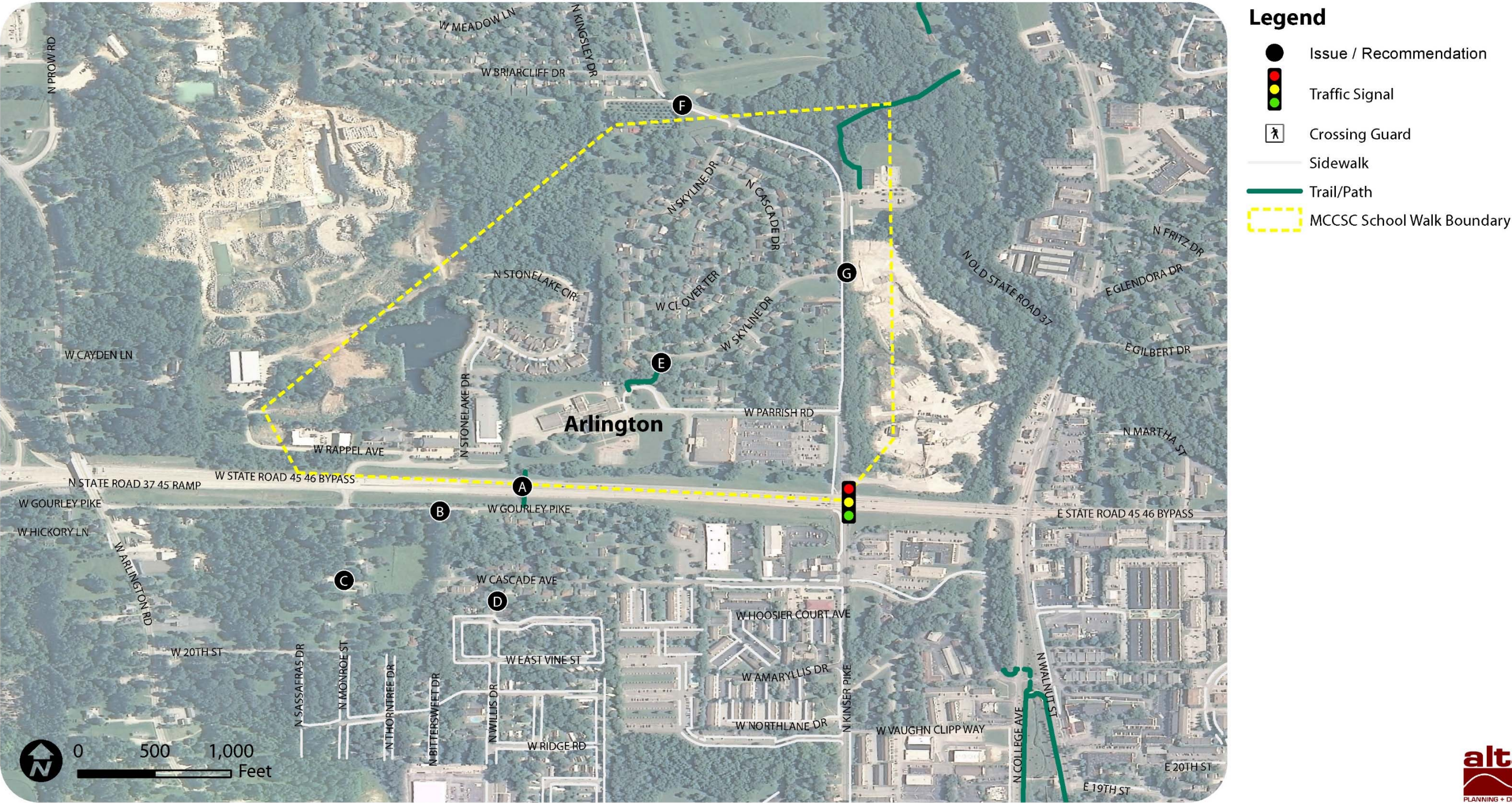
2.2 Issues and Recommendations

Map 1 on the following page presents the existing facilities around Arlington Heights Elementary School. The existing issues identified in black circles correspond with the issues presented in Table 2-1. Issues were generated from existing conditions and school staff input. Many of these issues require working with the City to identify next steps.

Table 2-1. SRTS Issues at Arlington Heights Elementary School

Map Key	Location	Issue/Discussion	Recommendation
A	Pedestrian Bridge over Highway 45/46	The bridge is an important pedestrian connection for the school and neighbors, but the pavement on the paths leading to the bridge on both sides are in poor condition and trees block visibility	Work with the City of Bloomington to improve pavement quality and visibility on the bridge approaches
B	West Gourley Pike	Street is not bicycle or pedestrian friendly	Support future bicycle and pedestrian facilities
C	North Monroe Street	Street is not bicycle or pedestrian friendly	Support future bicycle and pedestrian facilities
D	Arlington Valley roads	Roads in this neighborhood are not connected with roads that access the school	Work with the City of Bloomington and local residents to install a path off the north end of Willis Drive or the east end of East Vine Road to connect to West Cascade Avenue
E	Path connector from Skyline Drive to Arlington Heights	This is a great asset for bicycle and pedestrian connections	Work with the City of Bloomington to maintain the connection and advertise its existence to school parents as a recommended route
F	Kinser Pike sidewalk to Briarcliff Drive	This sidewalk connection to the Briarcliff neighborhood is an important bicycle and pedestrian connection for Arlington Heights	Educate 4th grade and older students about how to safely walk in residential streets to expand the walk zone
G	North Kinser Pike crossing	Arlington Heights often hosts walking field trips to Cascade Park, crossing at near the community center parking lot to access the trails that lead to the playground	Work with the City of Bloomington to design and install a crosswalk on North Kinser Pike

Arlington Heights Elementary School



Map 2-1. Arlington Heights Elementary School Issues Map

This page intentionally left blank.

Priority City-Led Infrastructure Recommendations

Table 2-2 lists key improvements that would be led by the City of Bloomington to improve conditions for students traveling to Arlington Heights Elementary. Appendix A includes a complete list of recommendations.

Table 2-2. Infrastructure Recommendations at Arlington Heights Elementary School

ID	Location	Issue	Recommendation
1	Pedestrian Bridge over Highway 45/46	Pedestrian bridge is used by neighbors but not by students; poor pavement quality and lack of visibility	Improve approach to the bridge on the north and south sides. Trim trees and shrubs so the bridge can be seen from the Arlington Heights campus
2	W Gourley Pike pedestrian connection to Arlington Valley Drive	Pedestrian bridge is used by local neighbors but not by students due to lack of connections to the neighborhood	Sponsor an engineering study to determine the most efficient means of connecting the Arlington Valley neighborhood to the pedestrian bridge. Consider a connector at Willis Drive and West Cascade Avenue or at East Vine Road and West Gourley Pike
3	Crosswalk on N Kinser Pike	Classes cross North Kinser Pike to reach Cascades Park for walking field trips, but the crossing is challenging	Sponsor an engineering study to determine the best location for a crosswalk on North Kinser Pike

One-Year Action Plan

The Action Plan is a list of attainable goals in the first year, as determined by MCCSC staff. The Plan complements the above infrastructure recommendations by prioritizing short-term non-infrastructure and infrastructure improvements. It should be updated periodically as the previous tasks are accomplished or new opportunities arise. Appendix A outlines the infrastructure recommendations in greater detail, while Appendix E provides best practices for SRTS across all the “E’s.”

Table 2-3. Arlington Heights Elementary School One Year Action Plan

Non-Infrastructure	
Encouragement	Implement Parent Pledge
	Participate in the International Walk to School Day celebration in October 2014 with a Celebrity Walking School Bus
	Look for parent “leaders” to form a regular walking school bus for students located within the existing walk zone, or if possible, from the Briarcliff Drive neighborhood
Education	Focus an education effort on the students living in the Skyline neighborhood, educate them on how to walk safely on a residential street, then encourage them to walk to school
	Include a SRTS Fact Corner in the monthly school newsletter
Enforcement	Implement School Safety Campaign
Evaluation	Conduct parent surveys and student hand tallies
Infrastructure	
Intersections	Work with the City of Bloomington to conduct an engineering study to determine the best location for a crosswalk to cross N Kinser Pike and north of W Winding Way to access Cascades Park
	Add crosswalks across Briarcliff Drive at N Kinser Pike
Signage for School Area Traffic Control	Install school zone signage as recommended in the Manual of Uniform Traffic Control Devices (MUTCD)
Sidewalks	Begin necessary engineering studies with the long term goal of connecting the Arlington Valley Drive neighborhood to the school via the pedestrian bridge over Highway 45/46

Primary School Route Map

The map on the following page shows recommended walking and bicycling routes to Arlington Heights Elementary. North and West Skyline Drive is a key route, as is West Parrish Road. Without improvements to the pedestrian bridge over Highway 45/46 and pedestrian facilities in the neighborhood, there is no recommended route from the south.

This map can be shared with parents during school orientation and during the publicity for Walk to School Day or similar events. Parents who live too far from school to walk could consider meeting at a location along one of the routes and walking as a group to school.

The map also establishes priority locations for improvements. It can support a grant application for infrastructure funding. As improvements are made, the maps should be revised to reflect the most recent conditions for walking and bicycling to Arlington Heights Elementary.

This page intentionally left blank