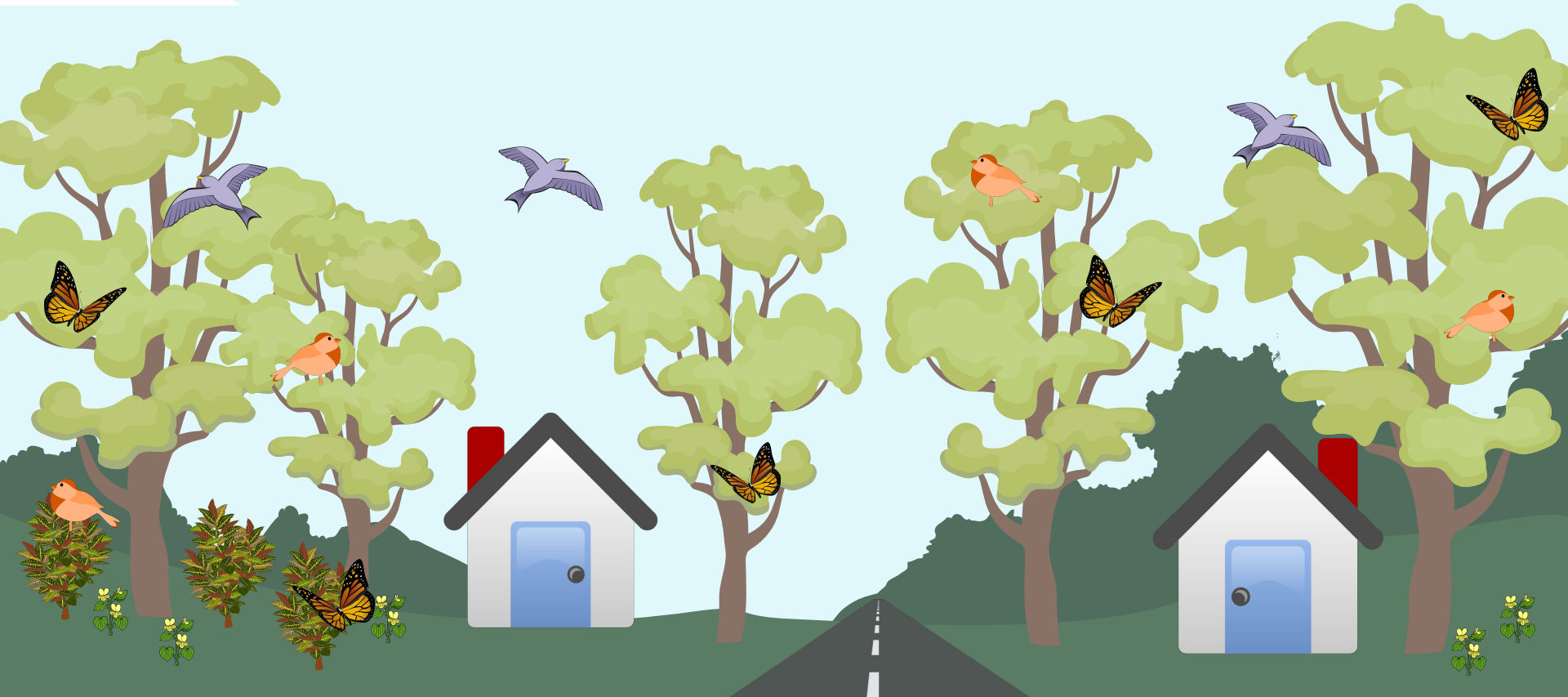


Winslow-Crestmont Wildlife Corridor Project



CITY OF
BLOOMINGTON
PARKS AND RECREATION

Wildlife Corridor

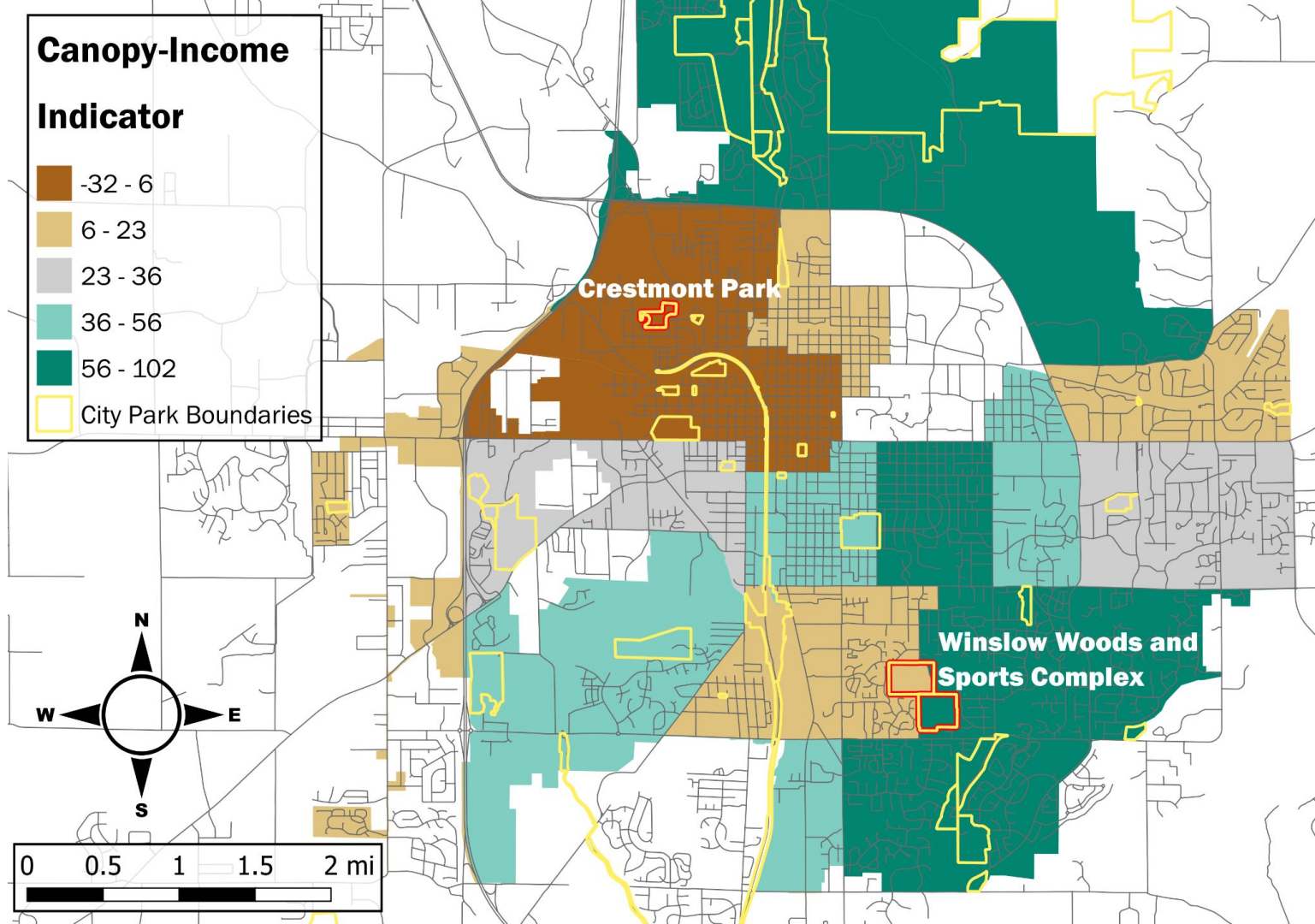


Map of Bloomington, Indiana

Low score:
lower income
AND lower
canopy levels

High score:
higher income
AND higher
canopy levels

*(white indicates
no data available
from map
sources)*



Canopy - Income Indicator

A custom indicator was created to show the relationship between canopy cover and income levels in Bloomington. This map uses data organized by census tracts.



Socioeconomic map source: [IU Environmental Resilience Institute using 2010 US Census data](#)

Canopy map source: CanopyBloomington using [Davey Resource Group Urban Tree Canopy Assessment 2019](#)



Tree Equity Score



Tree Equity Score measures how well the benefits of trees are reaching communities living on low-incomes, communities of color and others disproportionately impacted by extreme heat and other environmental hazards.

- Tree Equity Score is a nationwide score that highlights inequitable access to trees.
- The score is calculated at the neighborhood (Census block group) level.
- The score ranges from 0-100. The lower the score, the greater priority for tree planting. A score of 100 means the neighborhood has enough trees.
- Tree Equity Score covers every urban Census block group in the United States, including Hawaii and Alaska. Data for Puerto Rico and the U.S. Virgin Islands are due for release in Fall 2023.

www.treeequityscore.org

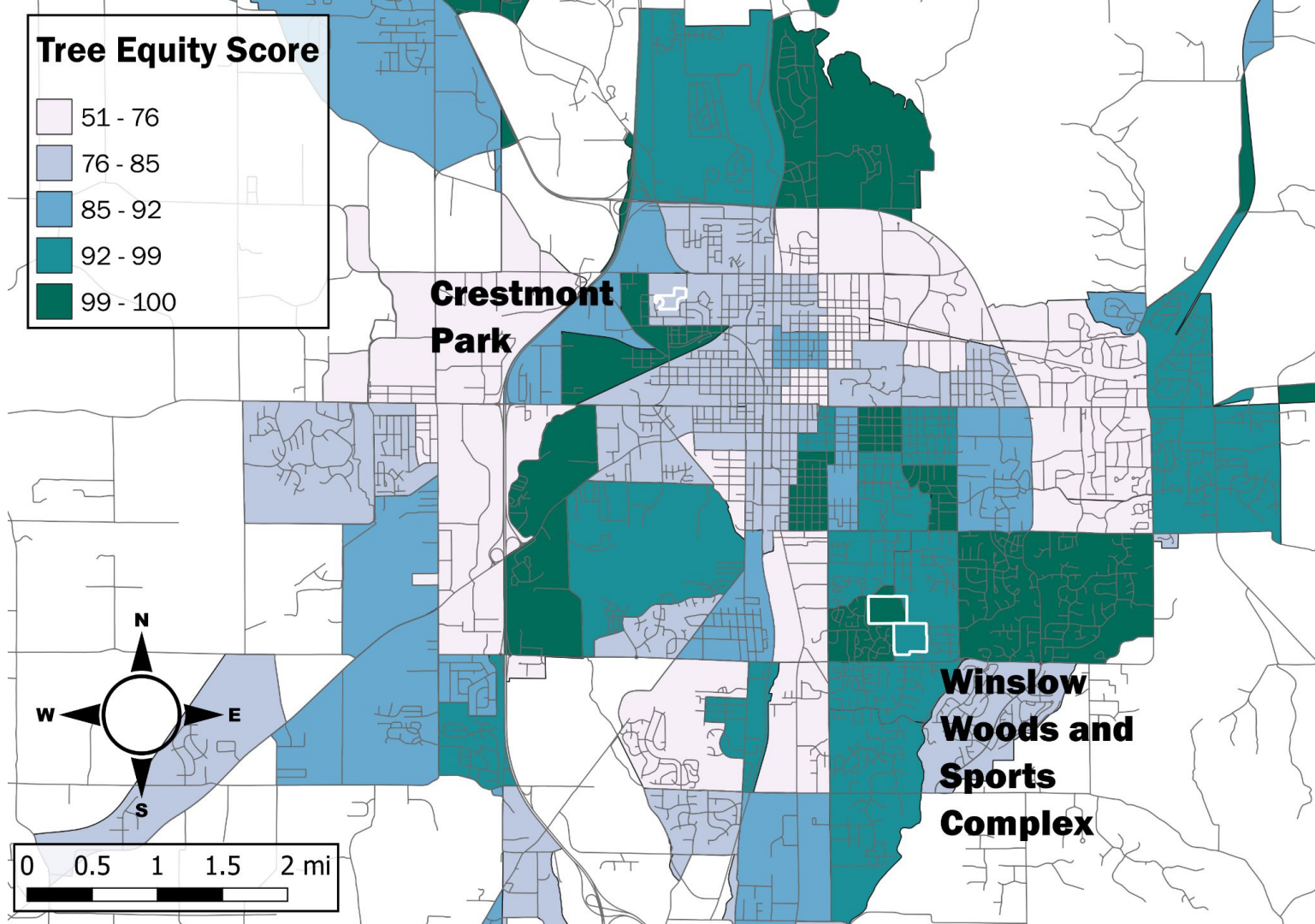
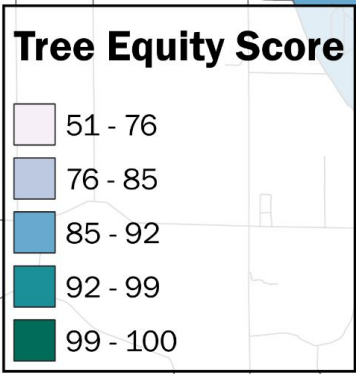
These values are represented on the following slide:
Bloomington Tree Equity Score Map



Bloomington, Indiana Tree Equity Score Map



www.treeequityscore.org

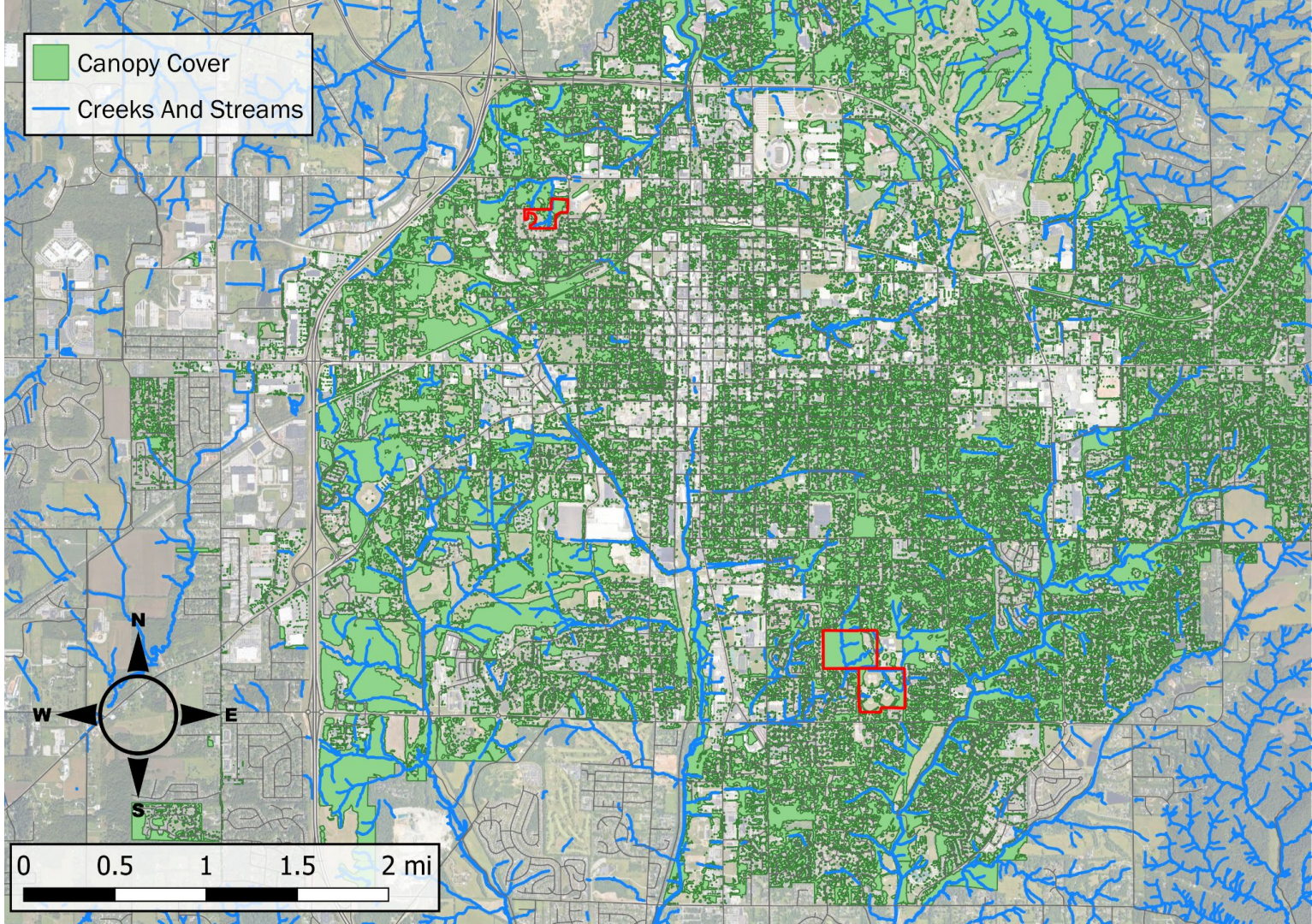


**Crestmont
Park**

**Winslow
Woods and
Sports
Complex**

Bloomington, Indiana

Canopy Cover Map and Waterways

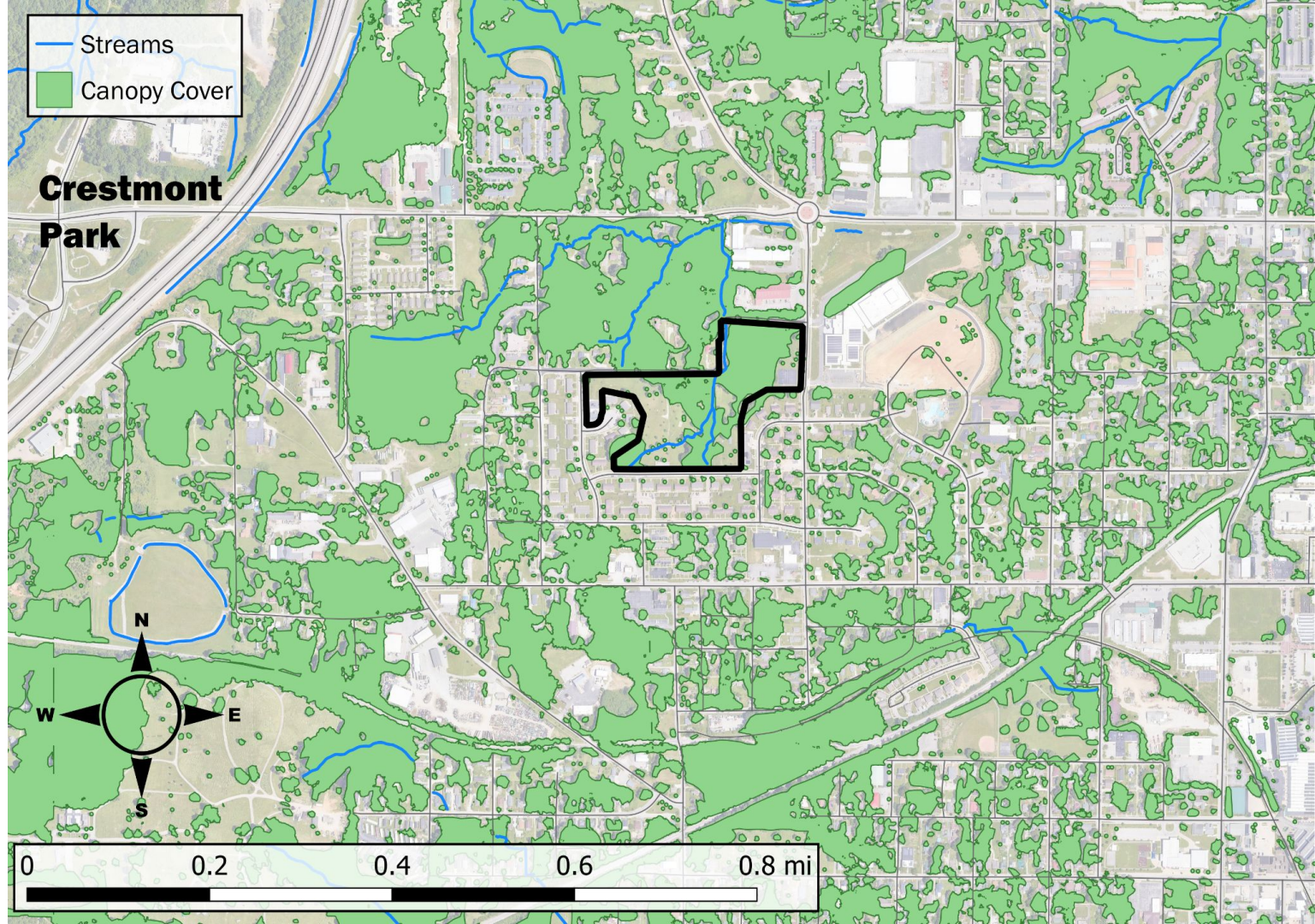


Canopy Map from CanopyBloomington using [Davey Resource Group data](#)

Streams map from [City of Bloomington](#)

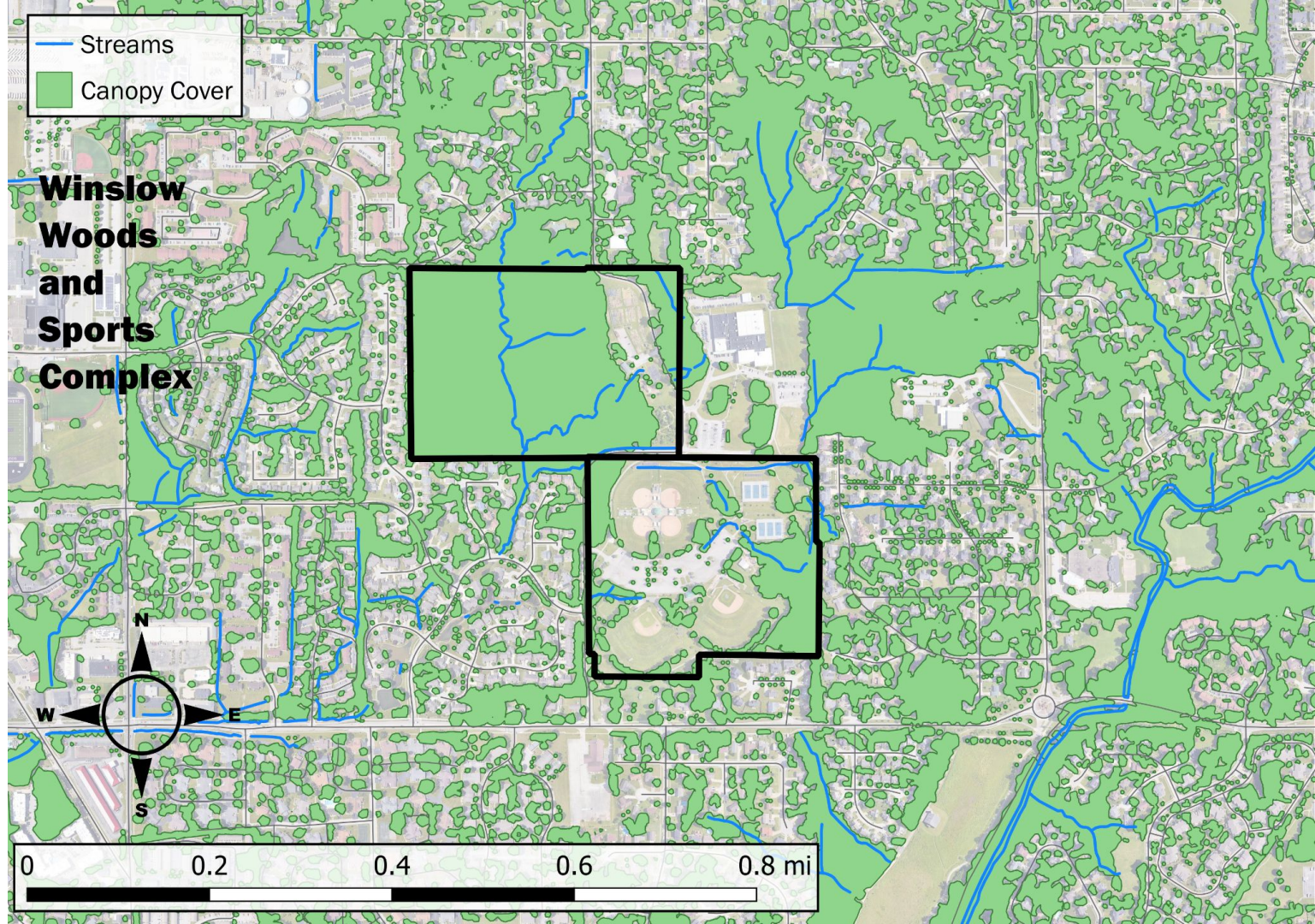
Bloomington, Indiana

Crestmont Park Close View



Bloomington, Indiana

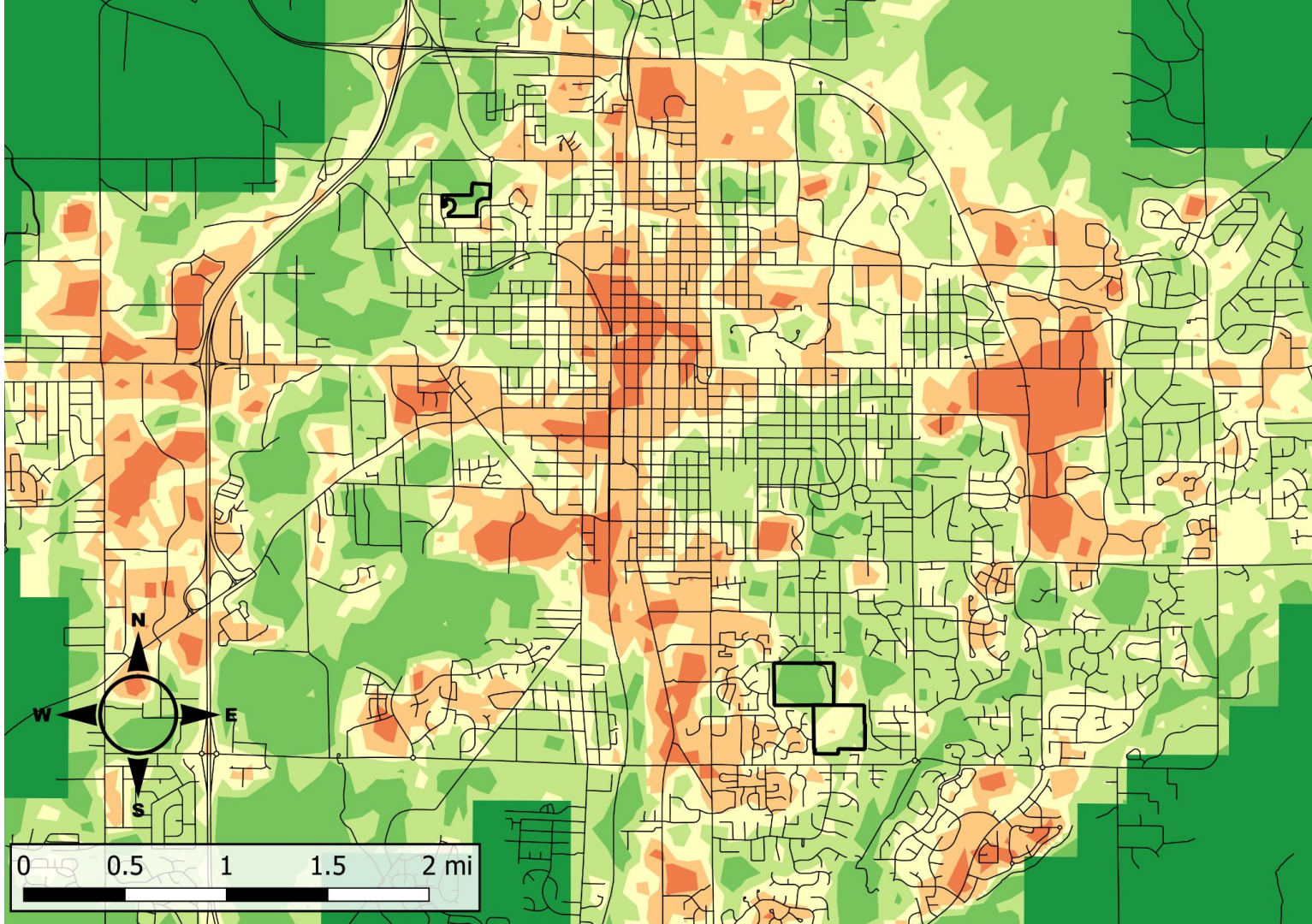
Winslow Woods (north) and Winslow Sports Complex (south) Close View



Bloomington, Indiana

Heat Map

Representing human activity, development, reflected heat off surfaces

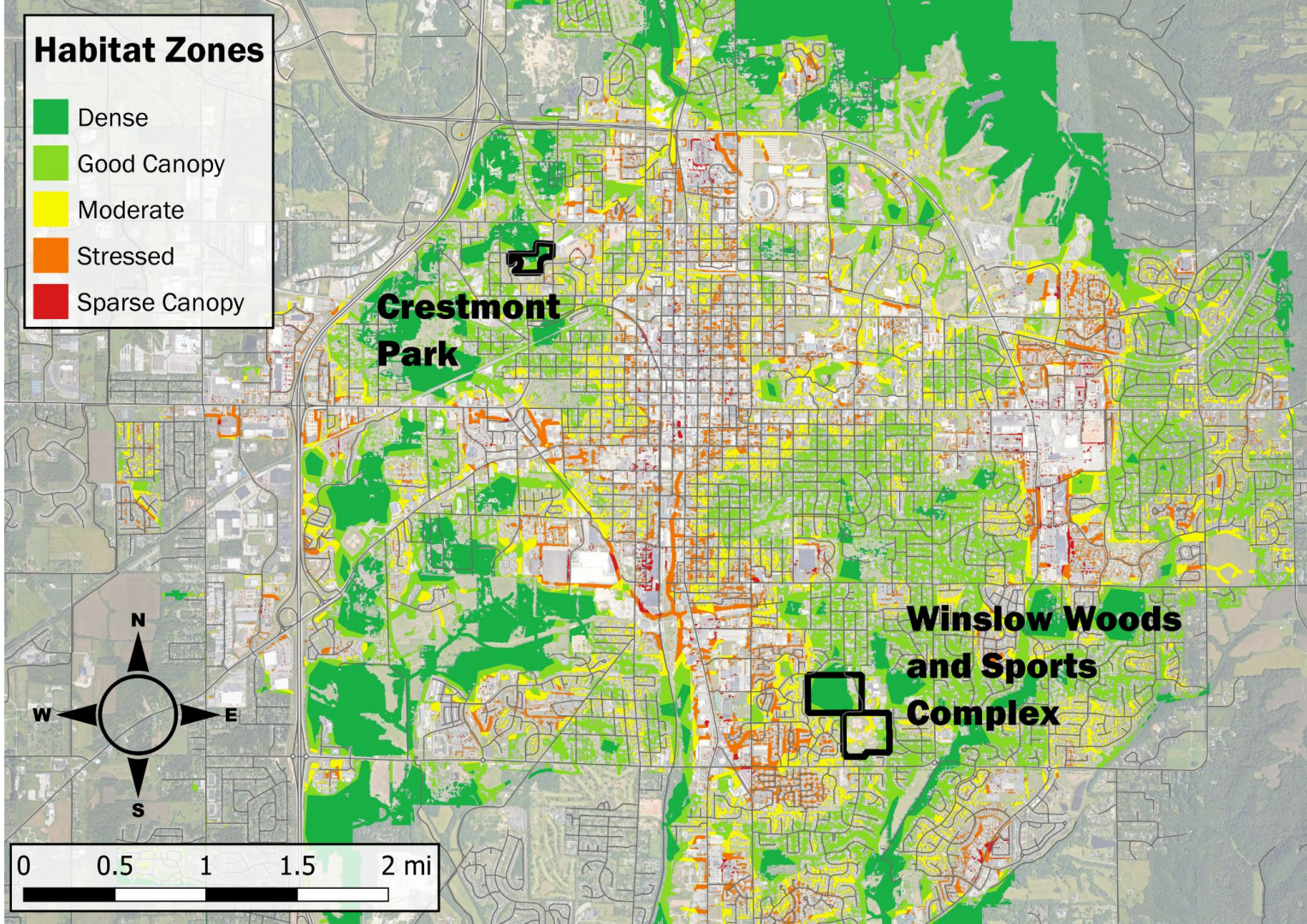


Map provided by City of Bloomington

Bloomington's tree canopy and creek areas were overlaid with the heat map indicating surface heat.

Impervious surfaces with low canopy create higher heat zones.

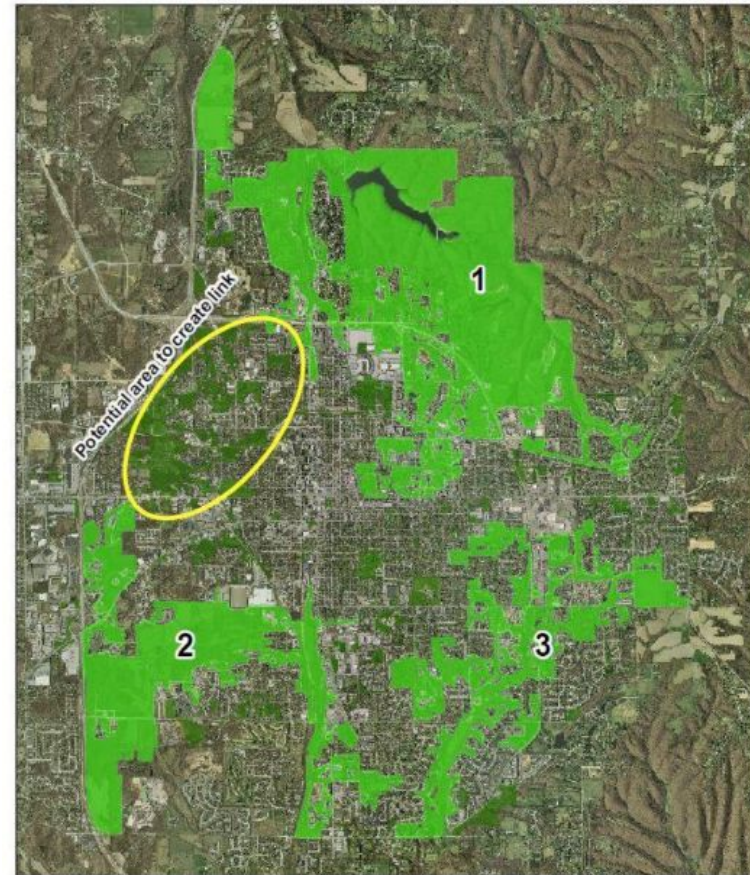
Less surface heat indicates thicker vegetation.



Bloomington Habitat Connectivity Plan 2017 By the Environmental Commission

The area within the yellow ellipse includes Crestmont Park, and has the best potential of linking area 1 and 2 together with a greenspace corridor.

“We chose this area to create a link because it connects the largest, most sensitive area (Griffy Lake) with the smallest, least sensitive area (Clear Creek). There’s also already quite a bit of greenspace here — shown in dark green — so the foundation for a corridor is nearly there. A high-quality corridor will promote increased genetic diversity, as species from different parts of the city (and thus different populations) will be able to interbreed more easily.” - [Environmental Commission, HCP](#)



Bloomington Urban Greenspace

Legend

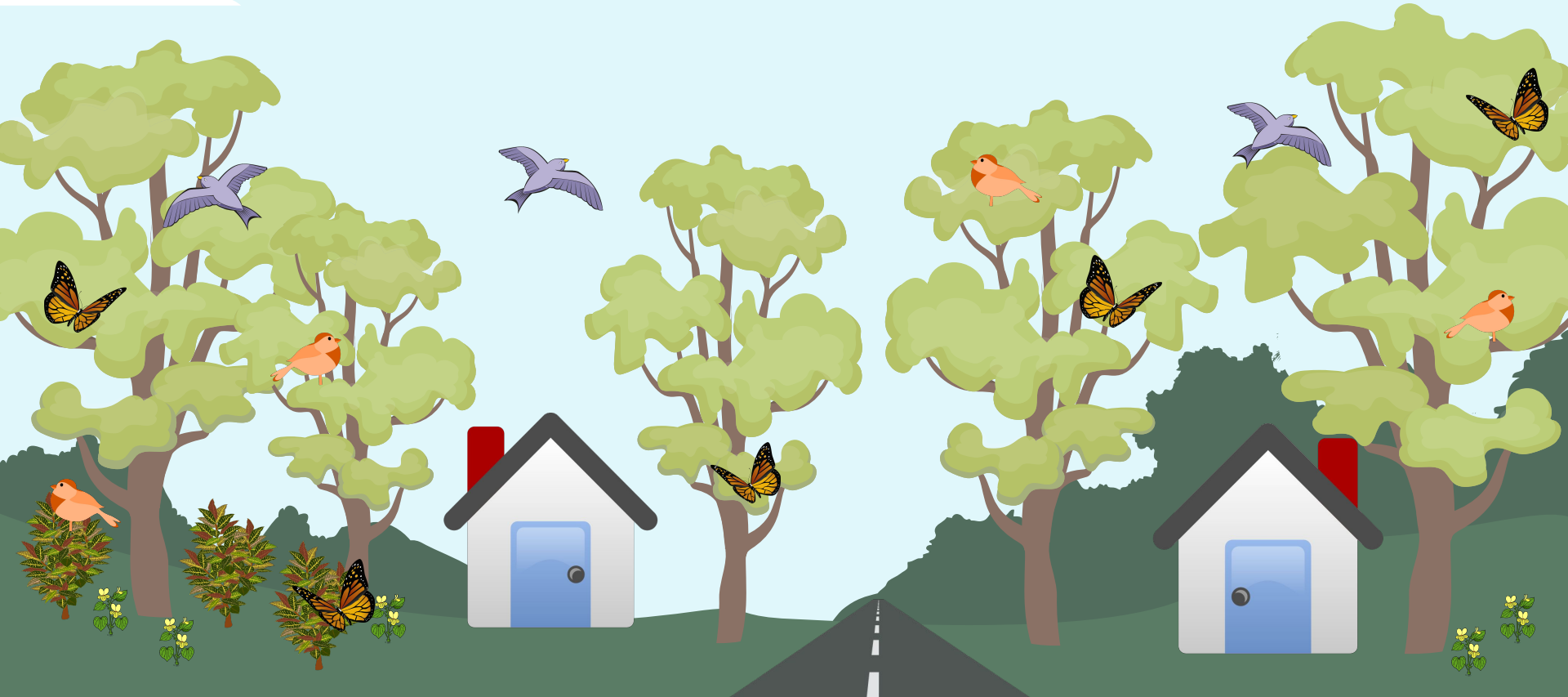
- Top 3 Consolidated
- Green Space Land Cover

The area within the yellow ellipse has the best potential of linking Area #1 and #2 together with a greenspace corridor.

0 0.5 1 2 Miles



Wildlife Corridor



Urban Greenspace

Please contact *Urban Greenspace Outreach Coordinator* Gillian Field with your interest in the *Winslow-Crestmont Wildlife Corridor Project*. We invite you to become an Adopt-a-Greenspace and Weed Wrangle volunteer, and to explore neighborhood or organization partnerships with us.

gillian.field@bloomington.in.gov

Cell phone: 812 327- 3708

www.bloomington.in.gov/parks/parks/adopt-a-greenspace

Thank you for caring



**CITY OF
BLOOMINGTON**
PARKS AND RECREATION

