

RESIDENTIAL STORMWATER GRANTS 2023



AGENDA

- **Introductions**
- **Residential Stormwater Grants 2023**
- **Bloomington's Watersheds**
- **Residential Stormwater Practices**
- **Question and Answer Session**
- **Adjourn**

CITY OF BLOOMINGTON MS4 STAFF

Kriste Lindberg

Stormwater Education Specialist

Liz Carter

MS4 Coordinator

Katherine Zaiger

Assistant Director- Environmental
Division



DEADLINES

Applications Due
Friday, September 1, 2023
by 5 pm

SUBMITTALS

Submit Applications To:

bloomington.in.gov/utilities/stormwater/grants



CITY OF BLOOMINGTON
UTILITIES

2023 Residential Stormwater Grant Application

Residential Stormwater Grants 2023
City of Bloomington Utilities

Updated: 12/02/2022

Photo credit: Carrol Krause, The Herald-Times

Please complete this form to apply for a Residential Stormwater Grant 2023 to improve water quality by improving drainage, reducing erosion, and/or capturing stormwater.

Eligibility:

- Single-family, owner-occupied, homes on private property.



RESIDENTIAL STORMWATER GRANTS

- Addressing neighborhood drainage and erosion issues
- Small grants for stormwater projects on private property

2022 GRANTS

- **19 applications between 30 households were received**
- **10 projects were awarded comprising a combination of bioswales, dry creek beds, rain gardens, and other erosion control measures**
- **Project costs ranged from around \$1,500 to \$11,000; average was about \$6,000**

ELIGIBILITY



- Single-family residential properties
- Applicants must pay the City of Bloomington's stormwater fee
- Applicant(s) must be the owner(s) of the property
- The parcels must be contiguous (next to each other)

APPLICATION INSTRUCTIONS

- First, contact us for more info
- Read the Website and related links
- Choose a Contractor
- Fill out Application, including:
 - Provide applicant Information
 - Project Information
 - Description of Existing Conditions
 - Description of Proposed Project

bloomington.in.gov/utilities/stormwater/grants





CHOOSING A CONTRACTOR: TIPS

- Licensed and bonded
- Insured
- Drainage experience
- Ask for examples
- Ask for references

APPLICATION INSTRUCTION - Attachments

- Location Map
- Photographs (up to 4, please no videos)
- Plan View Sketch
- Cost Estimate



PROJECT SELECTION

Staff Review

- Location
- Drainage area
- Proximity to waterways or stormwater infrastructure
- Potential to reduce flooding
- Potential to improve water quality
- Median neighborhood income levels

Review Committee

- Application materials
- Lower income neighborhoods
- Preference to number of people/area served
- Project feasibility
- Potential benefits in relation to stormwater

AWARDED PROJECTS

- Grant Agreement
- CBU will do a site visit before the project commences and inspect the project once it is finished
- CBU pays the contractor after a successful final site inspection has been conducted.
- 5-year Maintenance Plan



WHAT IS STORMWATER?

Water that flows over land from rainfall or snowmelt, before it enters natural waterways.



OUR CHANGING CLIMATE

More frequent and intense rainfall events punctuated by longer periods of drought.

Remember June and July, 2021?



MAYOR JOHN HAMILTON

“This partnership with property owners increases our resilience by adapting to the real effects of climate change. Together we can work to control flooding, protect our waterways, and mitigate future damage in environmentally responsible ways,” said Mayor John Hamilton.

“Through this program, residents and CBU can together reduce our collective climate impact and strengthen our resilience.”

We have an
opportunity to make
a difference.



STORMWATER PROGRAMS

- Residential Stormwater Grants
- Adopt-a-Drain
- Storm Drain Marking Program
- Stormwater Education Series, including videos

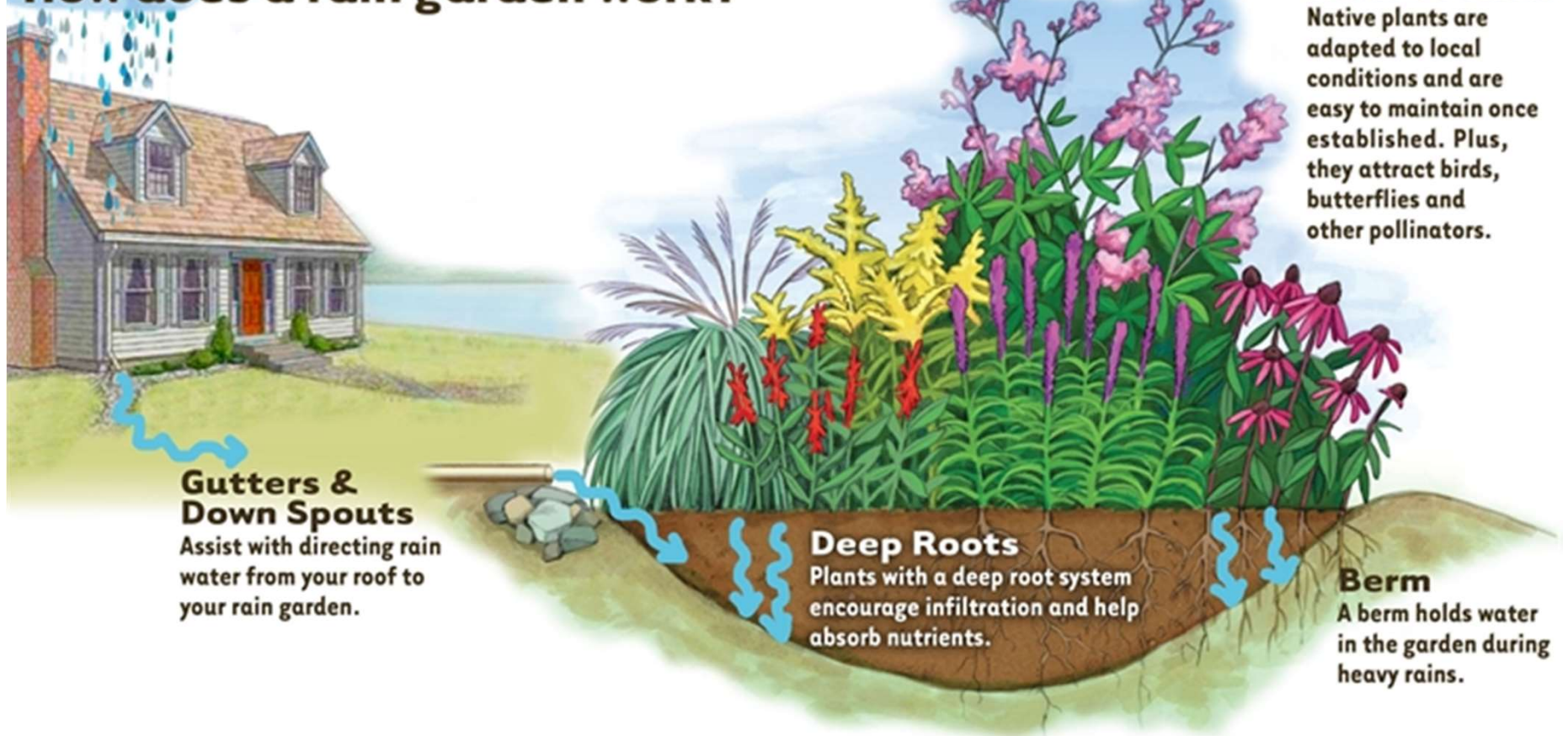




RESIDENTIAL STORMWATER PRACTICES

- Rain gardens
- Bioswales
- Dry Creek Beds
- Detention or Retention Ponds
- Ditch Stabilization
- Driveway Culverts

How does a rain garden work?



RAIN GARDEN



BIOSWALE

- Linear channel that is planted with vegetation similar to a rain garden
- Great for pollutant removal
- Requires engineered soil
- Large drainage areas will require an underdrain

DRY CREEK BED

- Only carries water after rain events
- Not meant for ponding water or removing pollutants
- CBU prefers projects which emphasize vegetative cover over “gray” infrastructure.



BIORETENTION PONDS



RETENTION AND DETENTION PONDS – Maintenance

- Capture runoff to prevent downstream flooding
- May improve water quality





DRIVEWAY CULVERTS

- Interface between public and private infrastructure
- Requires pre-construction meeting with CBU, the contractor, and the homeowner

SUBMITTALS

Submit Complete Applications To:

bloomington.in.gov/utilities/stormwater/grants

CONTACT

Kriste Lindberg

Stormwater Education Specialist

stormwater@bloomington.in.gov

(812) 349-3617

QUESTIONS?

THANK YOU!