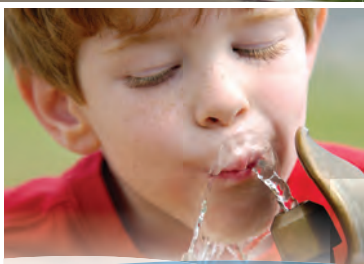


Residential Backflow

TIPS FOR KEEPING Your Drinking Water Safe

In Your Home and Around
your Neighborhood



CITY OF BLOOMINGTON

Cross-connections are not only unsafe, they are illegal and must be protected.

What is a cross-connection?

A cross-connection is a place where the city's water supply pipe comes into contact with a source that could contaminate the water.



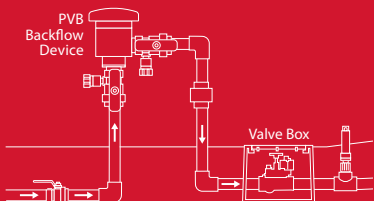
Any hose is a cross-connection when left submerged in a swimming pool, laundry sink, or car wash bucket.



To protect against these common cross-connections, check to see if you have air vacuum breakers installed on each of your hose bibs.

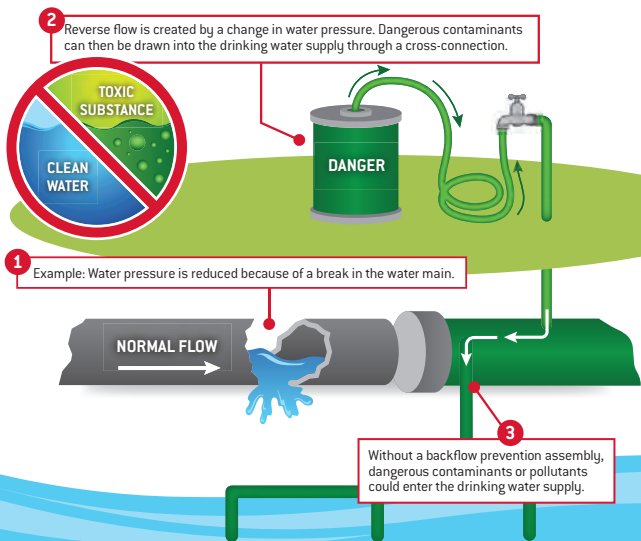
Confirm that your irrigation system has an approved backflow assembly.

The backflow prevention assembly is a device usually found between your water meter and your irrigation water service line before the first sprinkler head. If your irrigation system does not include a backflow prevention system



prevention assembly, city rules require that you install an approved Pressure Vacuum Breaker (PVB), per city standards. All backflow prevention devices must be tested annually.

Test results from irrigation systems requiring backflow prevention devices must be signed by a Certified Backflow Tester and be uploaded to Archonsafe via www.archonsafe.com or uploaded via the mobile app available on both the Apple App Store or Google Play.



What is Backflow?

Backflow is the undesirable reversal of flow of water mixed with other substances in any domestic, commercial or industrial system into the water distribution system